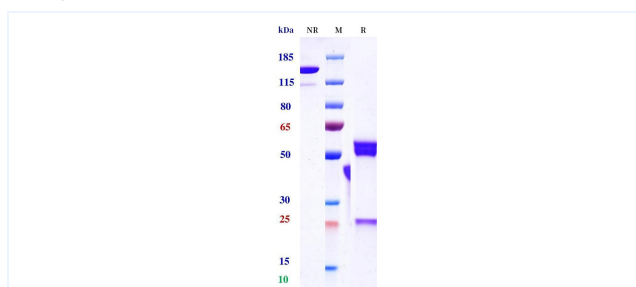


Product Details

Product name:	Anti-CD3 & EpCAM (M701 Biosimilar)	SKU:	BIO1022SM
Target Name:	CD3 & EpCAM	Size:	100ug/ 1mg/ 5mg
Target Uniprot:	P07766 & P16422	Concentration:	Lyophilized
Clone#:	M701 (Bispecific)	Isotype:	Half IgG+ScFv
Reactivity:	Human	Calculated M.W.:	125.93 kDa
Application:	ELISA, Bioactivity: FACS, Functional assay, Research in vivo	Endotoxin:	<0.001 EU/ug
Formulation:	100 mM Pro-Ac 20mM Arg pH 5.0	Conjugation:	None
Storage:	-20°C for 2 years under sterile conditions; -20°C for 1 year under sterile conditions; Avoid repeated freeze-thaw cycles.	Expression System:	CHO
Reconstitution:	Dissolve with sterile ddH₂O	Purification:	Protein A

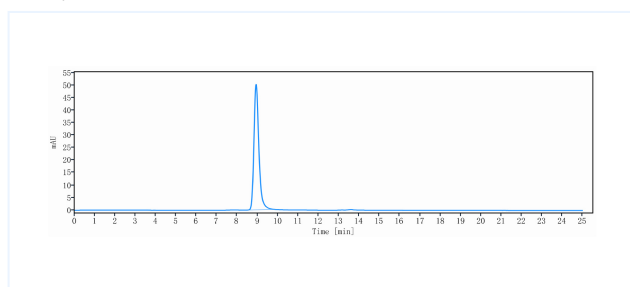
Data

Purity: SDS-PAGE



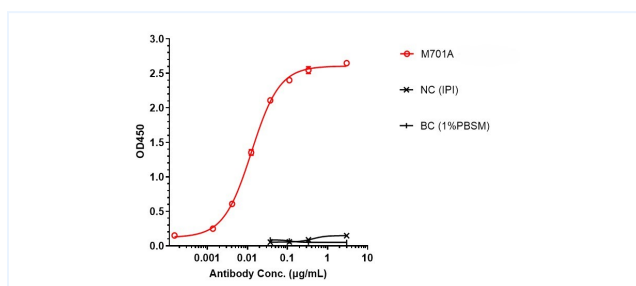
Anti-CD3 & EpCAM Reference Antibody (M701) on SDS-PAGE under reducing (R) condition. The purity of the protein is greater than 95%.

Purity: SEC-HPLC



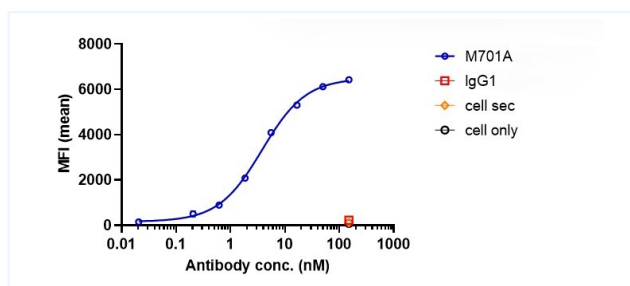
The purity of Anti-CD3 & EpCAM Reference Antibody (M701) is 95.5%, determined by SEC-HPLC.

ELISA



M701A bound to EpCAM protein, and then rebounded to secondary antibodies(Anti-human-IgG-Fc-HRP) , and read OD450. As shown in fig,M701A bound to in hu-EpCAM-His, and the EC50 was 0.013 nM.

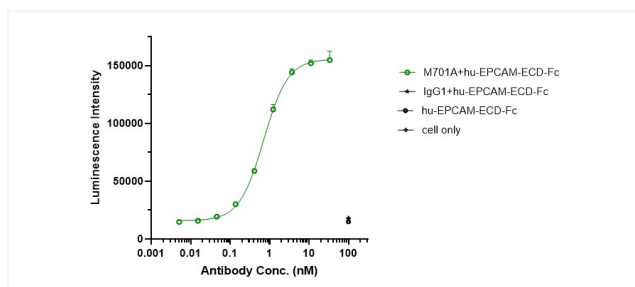
ELISA



M701A bound to huCD3e-jurkat cells, and then rebounded to fluorescent secondary antibodies(Anti-human IgG, Fcy PE) , and test by flow cytometry . As shown in fig, M701A bound to huCD3e-jurkat cells, and the EC50 was 3.809 nM.

Important Note: This product as supplied is intended for research use only, not for use in human, therapeutic or diagnostic applications.

Function: Luciferase



Co-incubation of M701A with Jurkat cells, then with the addition of GSV0-hu-EPCAM-ECD-Fc cells for 6 hours. Bright-Lite was used to detect the fluorescent signal. As shown in fig, M701A was able to activate the NF-AT signaling pathway, and the EC50 was 0.707 nM.