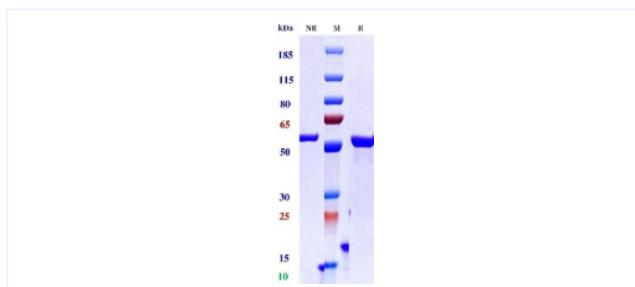


## Product Details

Product name:	Anti-CD19 & CD3 (Blinatumomab Biosimilar)	SKU:	BIO1020SM
Target Name:	CD19 & CD3	Size:	100ug/ 1mg/ 5mg
Target Uniprot:	P15391 & P07766	Concentration:	Lyophilized
Clone#:	Blinatumomab (Bispecific)	Isotype:	ScFv-ScFv
Reactivity:	Human	Calculated M.W.:	54.05 kDa
Application:	ELISA, Bioactivity: FACS, Functional assay, Research in vivo	Endotoxin:	<0.001 EU/ug
Formulation:	100 mM Pro-Ac 20mM Arg pH 5.0	Conjugation:	None
Storage:	-20°C for 2 years under sterile conditions; -20°C for 1 year under sterile conditions; Avoid repeated freeze-thaw cycles.	Expression System:	CHO
Reconstitution:	Dissolve with sterile ddH <sub>2</sub> O	Purification:	Protein A

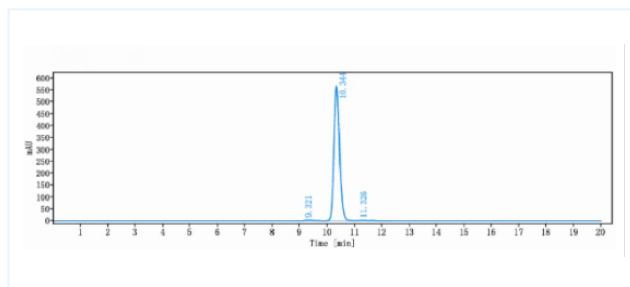
## Data

### Purity: SDS-PAGE



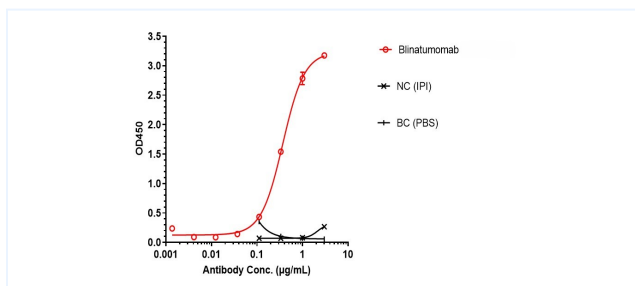
Anti-CD19 & CD3 Reference Antibody (Blinatumomab) on SDS-PAGE under reducing (R) condition. The purity of the protein is greater than 95%.

### Purity: SEC-HPLC



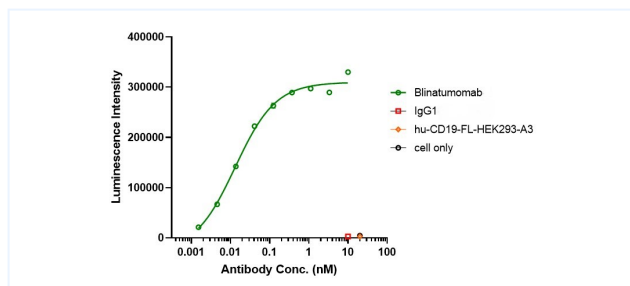
The purity of Anti-CD19 & CD3 Reference Antibody (Blinatumomab) is 98.26% , determined by SEC-HPLC.

### ELISA



Blinatumomab bound to CD19 protein, and then rebounded to secondary antibodies(Anti-6\*his-HRP ) , and read OD450. As shown in fig, Blinatumomab bound to in human CD19-His, and the EC50 was 0.370 nM.

### Bioactivity: FACS



Co-incubation of Blinatumomab with Jurkat cells, then with the addition of hu-CD19-HEK293 cells for 6 hours. Bright-Lite was used to detect the fluorescent signal.As shown in fig, Blinatumomab was able to activate the NF- $\kappa$ B signaling pathway.

**Important Note:** This product as supplied is intended for research use only, not for use in human, therapeutic or diagnostic applications.