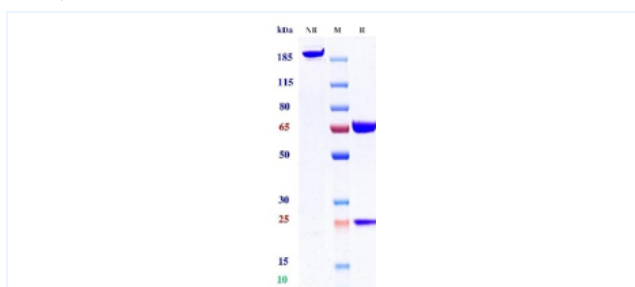


Product Details

Product name:	Anti-CD20 & CD47 (Amulirafusp alfa Biosimilar)	SKU:	BIO1012SM
Target Name:	CD20 & CD47	Size:	100ug/ 1mg/ 5mg
Target Uniprot:	P11836 & P07766	Concentration:	Lyophilized
Clone#:	Amulirafusp alfa (Bispecific)	Isotype:	IgG-VHH
Reactivity:	Human	Calculated M.W.:	174.12 kDa
Application:	ELISA, Bioactivity: FACS, Functional assay, Research in vivo	Endotoxin:	<0.001 EU/ug
Formulation:	100 mM Pro-Ac 20mM Arg pH 5.0	Conjugation:	None
Storage:	-20°C for 2 years under sterile conditions; -20°C for 1 year under sterile conditions; Avoid repeated freeze-thaw cycles.	Expression System:	CHO
Reconstitution:	Dissolve with sterile ddH₂O	Purification:	Protein A

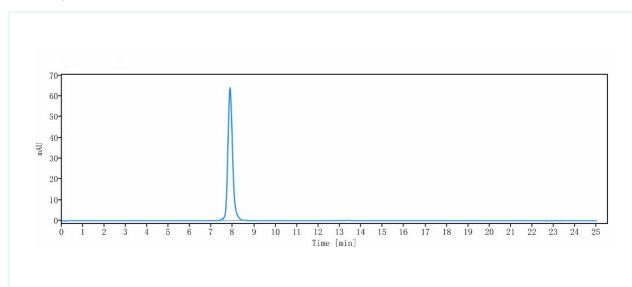
Data

Purity: SDS-PAGE



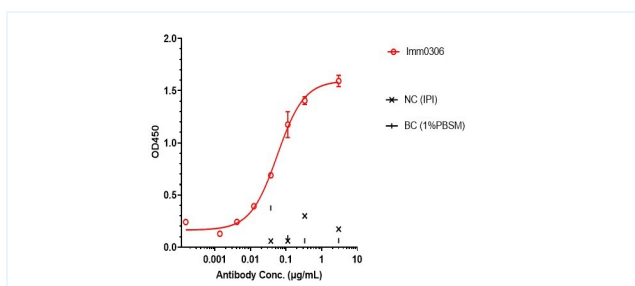
Anti-CD20 & CD47 Reference Antibody (Imm0306) on SDS-PAGE under reducing (R) condition. The purity of the protein is greater than 95%.

Purity: SEC-HPLC



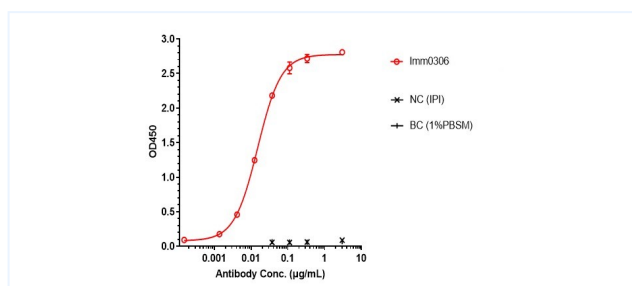
The purity of Anti-CD20 & CD47 Reference Antibody (Imm0306) is 99.17% , determined by SEC-HPLC.

ELISA



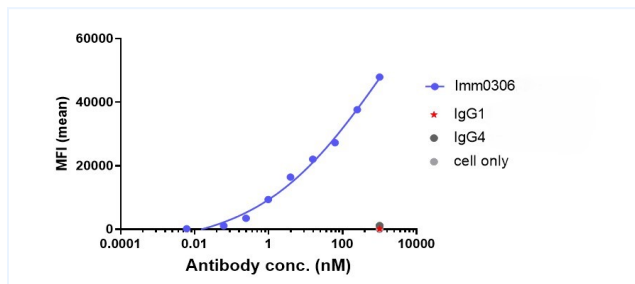
Imm0306 bound to CD20 protein, and then rebounded to secondary antibodies(Anti-Human-IgG-Fc-HRP) , and read OD450. As shown infig, Imm0306 bound human CD20 VLP, and the EC50 was 0.056 nM.

ELISA



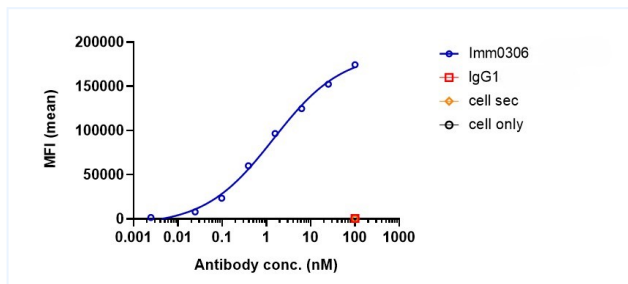
Imm0306 bound to CD47 protein, and then rebounded to secondary antibodies(Anti-Human-IgG-Fc-HRP) , and read OD450. As shown in fig, Imm0306 bound human CD47 Protein-His, and the EC50 was 0.015nM.

Bioactivity: FACS



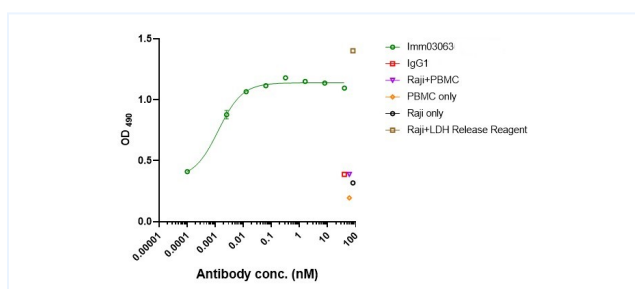
Imm0306 bound to CCRf-CEM cells, and then rebounded to fluorescent secondary antibodies(Anti-Human IgG, Fcy PE) , and test by flow cytometry. As shown in fig, Imm0306 bound to CCRf-CEM.

Bioactivity: FACS



Imm0306 bound to Raji cells, and then rebounded to fluorescent secondary antibodies(Anti-Human IgG, Fcy PE) , and test by flowcytometry. As shown in fig, Imm0306 bound to Raji cells, and the EC50 was 1.438 nM.

Function: ADCC



Co-incubation of Imm0306 with Raji cell and PBMCs for 4 hours, then LDH was detected to evaluate the ADCC activity of Imm0306. As shown in fig, Imm0306 has ADCC activity, and the IC50 was 0.001 nM.