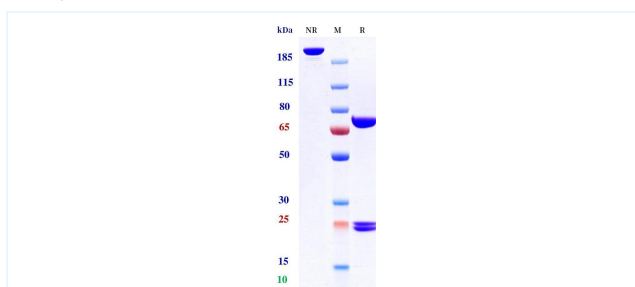


## Product Details

Product name:	Anti-cMet & EGFR (Emb01 Biosimilar)	SKU:	BIO1010SM
Target Name:	cMet & EGFR	Size:	100ug/ 1mg/ 5mg
Target Uniprot:	P08581 & P00533	Concentration:	Lyophilized
Clone#:	Emb01 (Bispecific)	Isotype:	Fab-IgG
Reactivity:	Human	Calculated M.W.:	237.9 kDa
Application:	ELISA, Bioactivity: FACS, Functional assay, Research in vivo	Endotoxin:	<0.001 EU/ug
Formulation:	100 mM Pro-Ac 20mM Arg pH 5.0	Conjugation:	None
Storage:	-20°C for 2 years under sterile conditions; -20°C for 1 year under sterile conditions; Avoid repeated freeze-thaw cycles.	Expression System:	CHO
Reconstitution:	Dissolve with sterile ddH <sub>2</sub> O	Purification:	Protein A

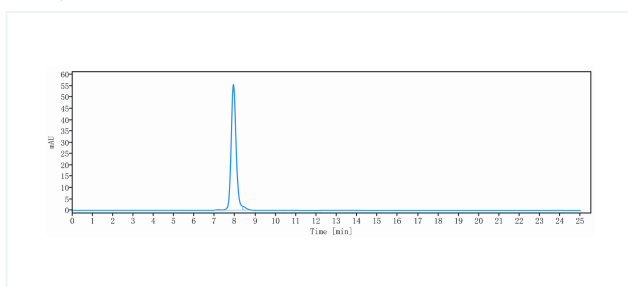
## Data

### Purity: SDS-PAGE



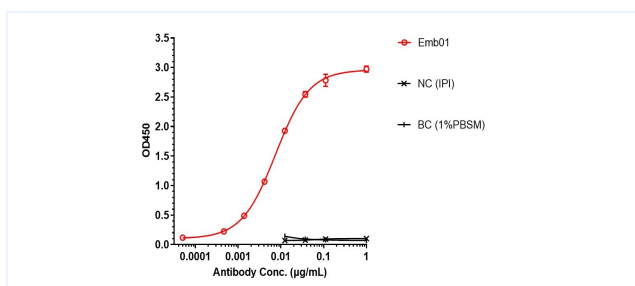
Anti-cMet & EGFR Reference Antibody (Emb01) on SDS-PAGE under reducing (R) condition. The purity of the protein is greater than 95%.

### Purity: SEC-HPLC



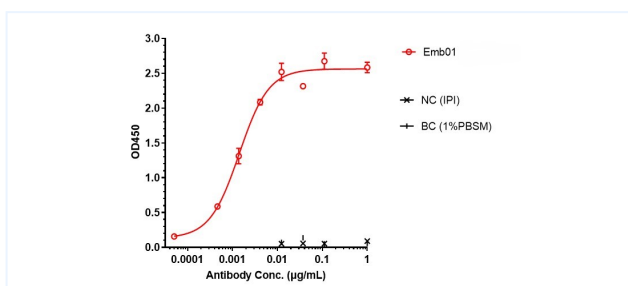
The purity of Anti-cMet & EGFR Reference Antibody (Emb01) is 97.60% , determined by SEC-HPLC.

### ELISA



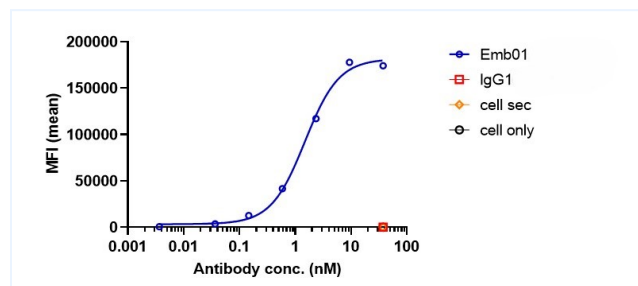
Emb-01 bound to cMet protein, and then rebound to secondary antibodies(Anti-human-IgG-Fc-HRP) , and read OD450. As shown in fig, Emb-01 bound to cMet-His, and the EC<sub>50</sub> was 0.007 nM.

### ELISA



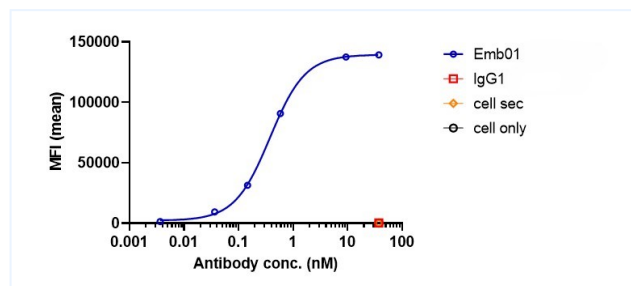
Emb-01 bound to EGFR protein, and then rebound to secondary antibodies(Anti-human-IgG-Fc-HRP) , and read OD450. As shown in fig, Emb-01 bound to EGFR-His, and the EC<sub>50</sub> was 0.001 nM.

#### Bioactivity: FACS



Emb-01 bound to EGFR-CHO-K cells, and then rebounded to fluorescent secondary antibodies(Anti-human IgG, Fcγ PE) , and test by flow cytometry . As shown in fig, Emb-01 bound to EGFR-CHO-K cells, and the EC50 was 1.489 nM.

#### Bioactivity: FACS



Emb01 bound to huMet-HEK293 cells, and then rebounded to fluorescent secondary antibodies(Anti-human IgG, Fcγ PE) , and test by flow cytometry . As shown in fig, Emb-01 bound to huMet-HEK293 cells, and the EC50 was 0.378 nM.