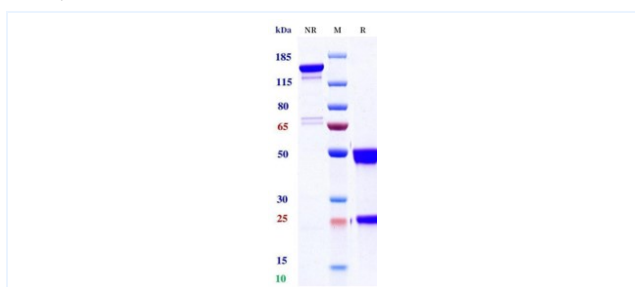


Product Details

Product name:	Anti-CD20 & CD3e (Mosunetuzumab Biosimilar)	SKU:	BIO1007SM
Target Name:	CD20 & CD3e	Size:	100ug/ 1mg/ 5mg
Target Uniprot:	P11836 & P07766	Concentration:	Lyophilized
Clone#:	Mosunetuzumab (Bispecific)	Isotype:	IgG-like
Reactivity:	Human	Calculated M.W.:	146.72 kDa
Application:	ELISA, Bioactivity: FACS, Functional assay, Research in vivo	Endotoxin:	<0.001 EU/ug
Formulation:	100 mM Pro-Ac 20mM Arg pH 5.0	Conjugation:	None
Storage:	-20°C for 2 years under sterile conditions; -20°C for 1 year under sterile conditions; Avoid repeated freeze-thaw cycles.	Expression System:	CHO
Reconstitution:	Dissolve with sterile ddH ₂ O	Purification:	Protein A

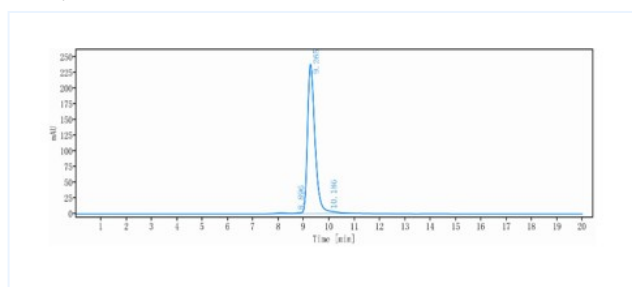
Data

Purity: SDS-PAGE



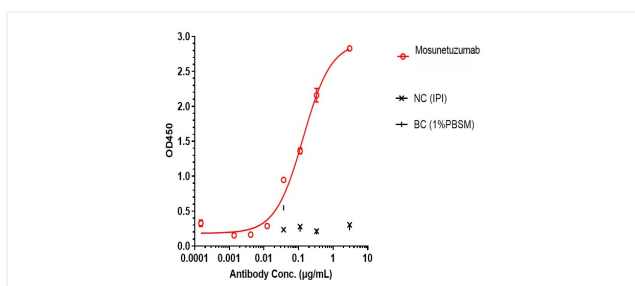
Anti-CD20 & CD3e Reference Antibody (Mosunetuzumab) on SDS-PAGE under reducing (R) condition. The purity of the protein is greater than 95%.

Purity: SEC-HPLC



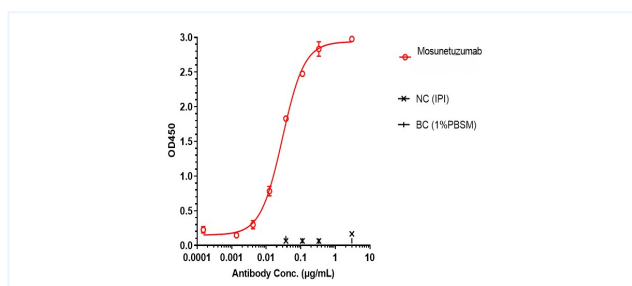
The purity of Anti-CD20 & CD3e Reference Antibody (Mosunetuzumab) is 96.7%, determined by SEC-HPLC.

ELISA



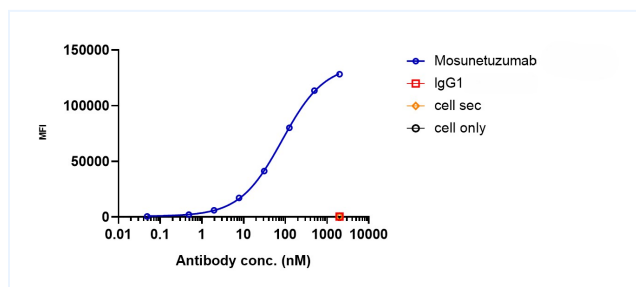
Mosunetuzumab bound to CD20 protein, and then rebounded to secondary antibodies(Anti-Human-IgG-Fc-HRP) , and read OD450. As shown in fig, Mosunetuzumab bound to huCD20-VLP , and the EC50 was 0.136 nM.

ELISA



Mosunetuzumab bound to CD3e protein, and then rebounded to secondary antibodies(Anti-Human-κ+λ-HRP) , and read OD450. As shown in fig 4, Mosunetuzumab bound to huCD3e-Fc , and the EC50was 0.029 nM.

Bioactivity: FACS



Mosunetuzumab bound to CD3e protein, and then rebounded to secondary antibodies(Anti-Human- κ + λ -HRP) , and read OD450. As shown in fig 4, Mosunetuzumab bound to huCD3e-Fc , and the EC50 was 0.029 nM.