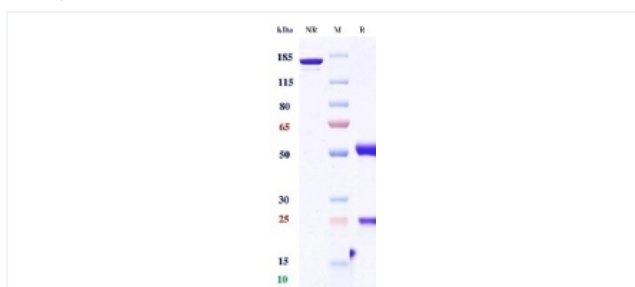


## Product Details

Product name:	Anti-B7-H3 & EGFR (Ibi-334 Biosimilar)	SKU:	BIO1006SM
Target Name:	B7-H3 & EGFR	Size:	100ug/ 1mg/ 5mg
Target Uniprot:	Q5ZPR3 & P00533	Concentration:	Lyophilized
Clone#:	Ibi-334 (Bispecific)	Isotype:	IgG-like
Reactivity:	Human	Calculated M.W.:	145.58 kDa
Application:	ELISA, Bioactivity: FACS, Functional assay, Research in vivo	Endotoxin:	<0.001 EU/ug
Formulation:	100 mM Pro-Ac 20mM Arg pH 5.0	Conjugation:	None
Storage:	-20°C for 2 years under sterile conditions; -20°C for 1 year under sterile conditions; Avoid repeated freeze-thaw cycles.	Expression System:	CHO
Reconstitution:	Dissolve with sterile ddH <sub>2</sub> O	Purification:	Protein A

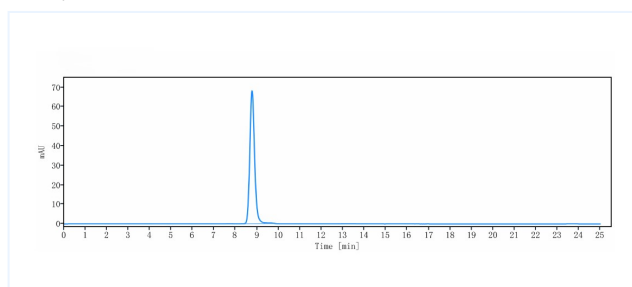
## Data

### Purity: SDS-PAGE



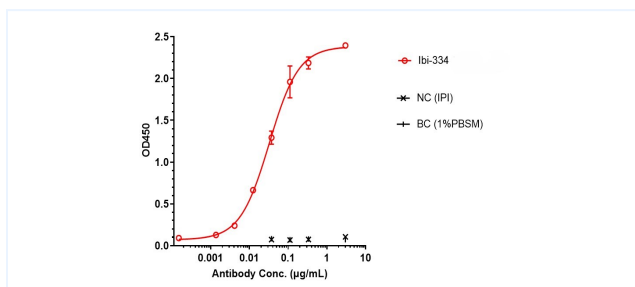
Anti-B7-H3 & EGFR Reference Antibody (Ibi-334) on SDS-PAGE under reducing (R) condition. The purity of the protein is greater than 95%.

### Purity: SEC-HPLC



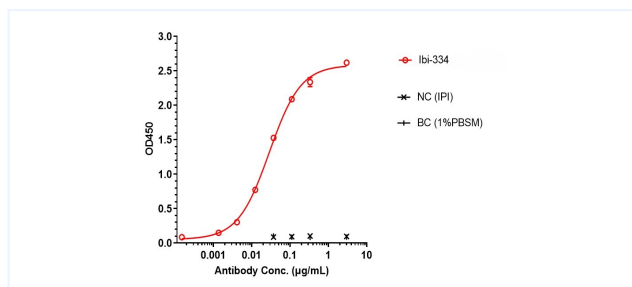
The purity of Anti-B7-H3 & EGFR Reference Antibody (Ibi-334) is 99.17% , determined by SEC-HPLC.

### ELISA



Ibi-334 bound to B7-H3 protein, and then rebounded to secondary antibodies (Anti-Human-IgG-Fc-HRP) , and read OD450. As shown in fig, Ibi-334 bound human B7-H3 Protein-His, and the EC<sub>50</sub> was 0.03nM.

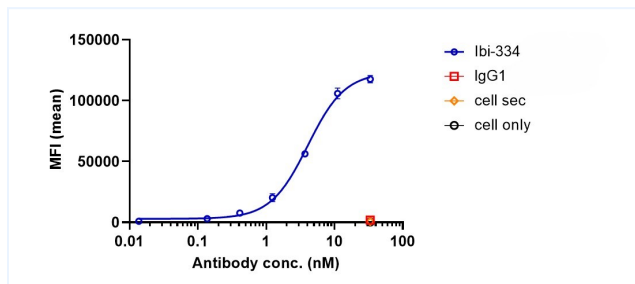
### ELISA



Ibi-334 bound to ERBB1/EGFR/HER1 protein, and then rebounded to secondary antibodies(Anti-Human-IgG-Fc-HRP) , and read OD450. As shown in fig, Ibi-334 bound human ERBB1/EGFR/HER1 Protein-His, and the EC<sub>50</sub> was 0.029 nM.

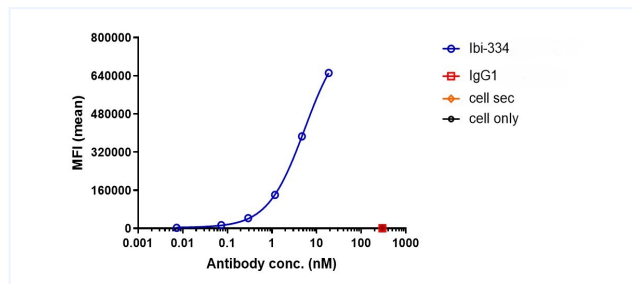
**Important Note:** This product as supplied is intended for research use only, not for use in human, therapeutic or diagnostic applications.

#### Bioactivity: FACS



Ibi-334 bound to huB7-H3 CHO-K cells, and then rebounded to fluorescent secondary antibodies(Anti-Human IgG, Fcγ PE) , and test by flow cytometry. As shown in fig, Ibi-334 bound to huB7-H3CHO-K cells, and the EC50 was 4.066 nM.

#### Bioactivity: FACS



Ibi-334 bound to in huEGFR CHO-K cells, and then rebounded to fluorescent secondary antibodies(Anti-Human IgG, Fcγ PE) , and test by flow cytometry. As shown in fig, Ibi-334 bound to in huEGFR CHO-K cells, and the EC50 was 5.398 nM.