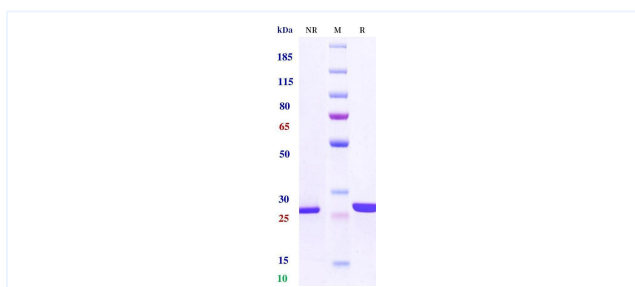


Product Details

Product name:	Anti-C5 & Serum Albumin (Gefurulimab Biosimilar)	SKU:	BIO0978SM
Target Name:	C5 & Serum Albumin	Size:	100ug/ 1mg/ 5mg
Target Uniprot:	P01031 & P02768	Concentration:	Lyophilized
Clone#:	Gefurulimab (Bispecific)	Isotype:	VHH-VHH
Reactivity:	Human	Calculated M.W.:	28.99 kDa
Application:	ELISA, Bioactivity: FACS, Functional assay, Research in vivo	Endotoxin:	<0.001 EU/ug
Formulation:	100 mM Pro-Ac 20mM Arg pH 5.0	Conjugation:	None
Storage:	-20°C for 2 years under sterile conditions; -20°C for 1 year under sterile conditions; Avoid repeated freeze-thaw cycles.	Expression System:	CHO
Reconstitution:	Dissolve with sterile ddH ₂ O	Purification:	Protein A

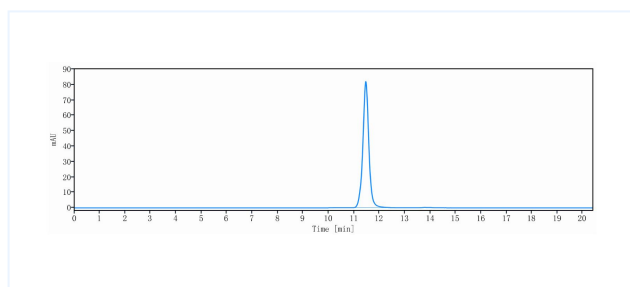
Data

Purity: SDS-PAGE



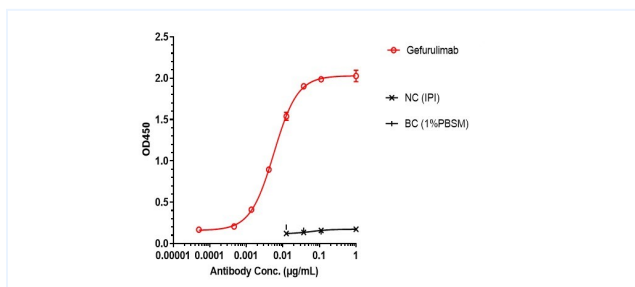
Anti-C5 & Serum Albumin Reference Antibody (Gefurulimab) on SDS-PAGE under reducing (R) condition. The purity of the protein is greater than 95%.

Purity: SEC-HPLC



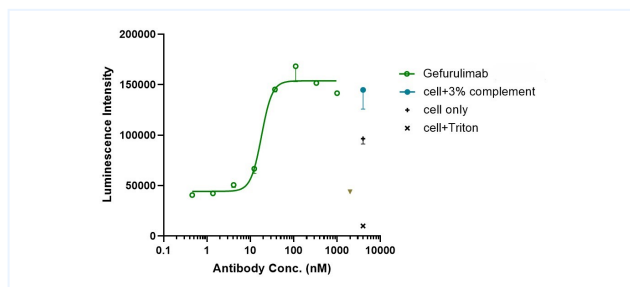
The purity of Anti-C5 & Serum Albumin Reference Antibody (Gefurulimab) is 100.00%, determined by SEC-HPLC.

ELISA



Gefurulimab bound to HSA protein, and then rebounded to secondary antibodies (Anti-human- κ + λ -HRP), and read OD450. As shown in fig, Gefurulimab bound to HSA-Fc, and the EC50 was 0.006 nM.

Function: Luciferase



Co-incubation of Gefurulimab with complement protein, then with the addition of Rituximab and Raji cells and incubated for 4 hours. CTG was used to detect the luciferase signal. As shown in fig, Gefurulimab can block rituximab-induced CDC killing, and the IC50 was 18.090 nM.

Important Note: This product as supplied is intended for research use only, not for use in human, therapeutic or diagnostic applications.