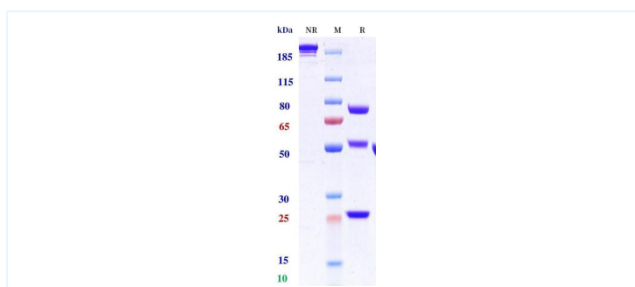


Product Details

Product name:	Anti-CD20 & CD3 (Glofitamab Biosimilar)	SKU:	BIO0972SM
Target Name:	CD20 & CD3	Size:	100ug/ 1mg/ 5mg
Target Uniprot:	P11836 & P07766	Concentration:	Lyophilized
Clone#:	Glofitamab (Bispecific)	Isotype:	IgG-Fab
Reactivity:	Human	Calculated M.W.:	170.28 kDa
Application:	ELISA, Bioactivity: FACS, Functional assay, Research in vivo	Endotoxin:	<0.001 EU/ug
Formulation:	100 mM Pro-Ac 20mM Arg pH 5.0	Conjugation:	None
Storage:	-20°C for 2 years under sterile conditions; -20°C for 1 year under sterile conditions; Avoid repeated freeze-thaw cycles.	Expression System:	CHO
Reconstitution:	Dissolve with sterile ddH ₂ O	Purification:	Protein A

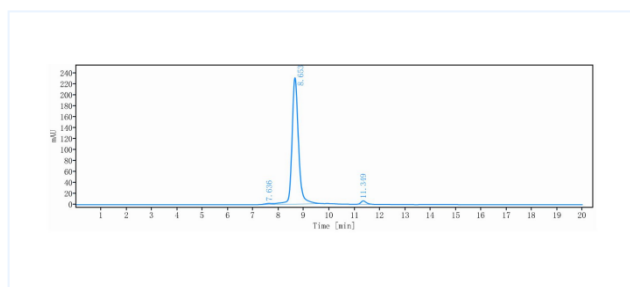
Data

Purity: SDS-PAGE



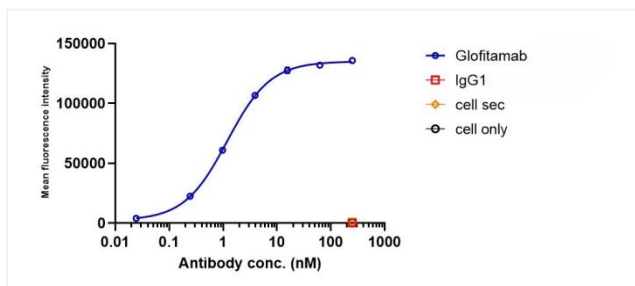
Anti-CD20 & CD3 Reference Antibody (Glofitamab) on SDS-PAGE under reducing (R) condition. The purity of the protein is greater than 95%.

Purity: SEC-HPLC



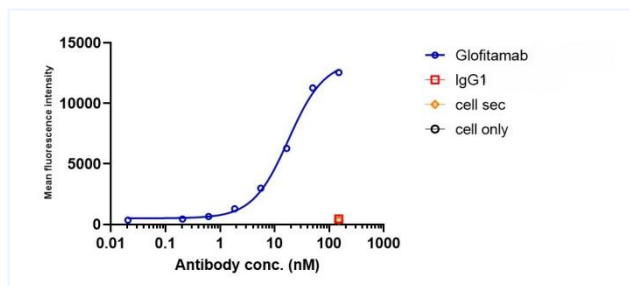
The purity of Anti-CD20 & CD3 Reference Antibody (Glofitamab) is 96.80 %, determined by SEC-HPLC.

Bioactivity: FACS



Glofitamab bound to Raji cells, and then rebounded to fluorescent secondary antibodies(Anti-Human IgG, Fcy PE) , and test by flow cytometry. As shown in fig, Glofitamab bound to Raji cells, and the EC₅₀ was 1.199 nM.

Bioactivity: FACS



Glofitamab bound to huCD3e-jurkat cells, and then rebounded to fluorescent secondary antibodies(Anti-Human IgG, Fcy PE) , and test by flow cytometry. As shown in fig, Glofitamab bound to huCD3e-jurkat cells, and the EC₅₀ was 17.980 nM.

Important Note: This product as supplied is intended for research use only, not for use in human, therapeutic or diagnostic applications.