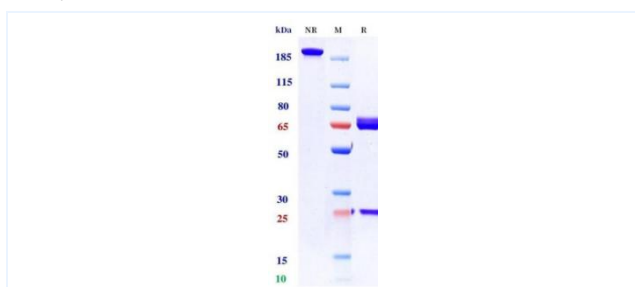


Product Details

| | | | |
|-----------------|---|--------------------|-----------------|
| Product name: | Anti-PD-L1 & VEGF (Sotiburafusp alfa Biosimilar) | SKU: | BIO0968SM |
| Target Name: | PD-L1 & VEGF | Size: | 100ug/ 1mg/ 5mg |
| Target Uniprot: | Q9NZQ7 & P15692 | Concentration: | Lyophilized |
| Clone#: | Sotiburafusp alfa (Bispecific) | Isotype: | IgG-VHH |
| Reactivity: | Human | Calculated M.W.: | 170.8 kDa |
| Application: | ELISA, Bioactivity: FACS, Functional assay, Research in vivo | Endotoxin: | <0.001 EU/ug |
| Formulation: | 100 mM Pro-Ac 20mM Arg pH 5.0 | Conjugation: | None |
| Storage: | -20°C for 2 years under sterile conditions; -20°C for 1 year under sterile conditions; Avoid repeated freeze-thaw cycles. | Expression System: | CHO |
| Reconstitution: | Dissolve with sterile ddH ₂ O | Purification: | Protein A |

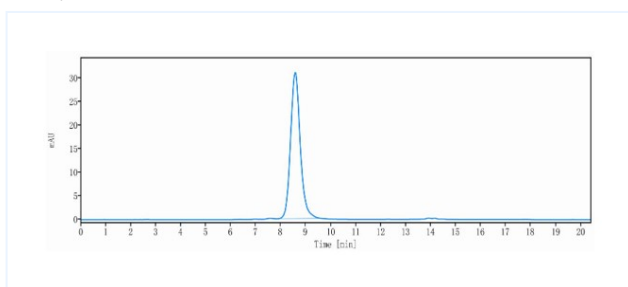
Data

Purity: SDS-PAGE



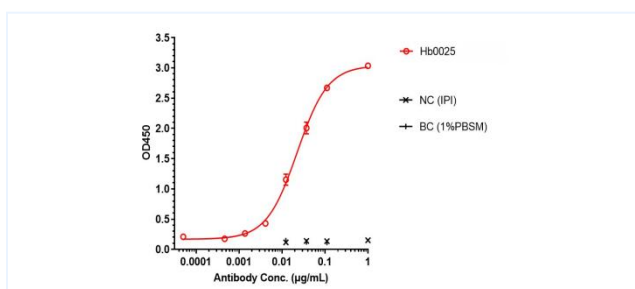
Anti-PD-L1 & VEGF Reference Antibody (Hb0025) on SDS-PAGE under reducing (R) condition. The purity of the protein is greater than 95%.

Purity: SEC-HPLC



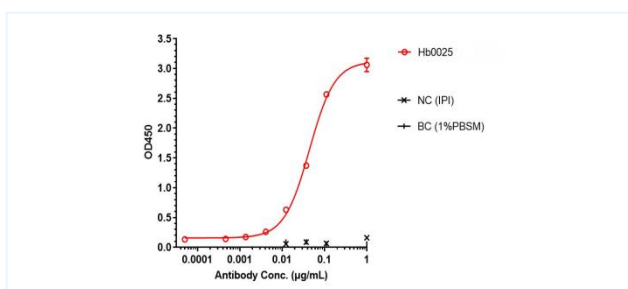
The purity of Anti-PD-L1 & VEGF Reference Antibody (Hb0025) is 100%, determined by SEC-HPLC.

ELISA



Hb0025 bound to VEGF protein, and then rebounded to secondary antibodies (Anti Human-IgG-Fc-HRP), and read OD450. As shown in fig, Hb0025 bound to huVEGFA-His, and the EC₅₀ was 0.022 nM.

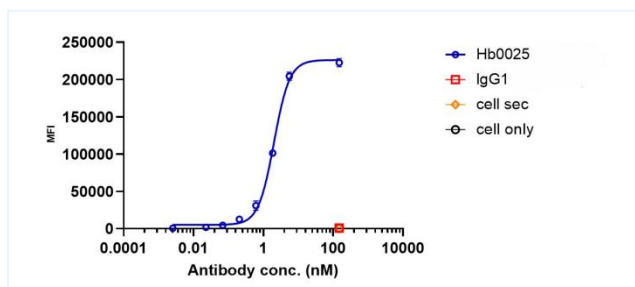
ELISA



Hb0025 bound to PD-L1 protein, and then rebounded to secondary antibodies (Anti-Human-κ+λ-HRP), and read OD450. As shown in fig, Hb0025 bound to huPD-L1-Fc, and the EC₅₀ was 0.044 nM.

Important Note: This product as supplied is intended for research use only, not for use in human, therapeutic or diagnostic applications.

Bioactivity: FACS



Hb0025 bound to huPD-L1-CHO-K cells, and then rebounded to fluorescent secondary antibodies(Anti-Human IgG, Fcy PE) , and test by flow cytometry . As shown in fig, Hb0025 bound to huPD-L1-CHO-K cells, and the EC50 was 2.025 nM.