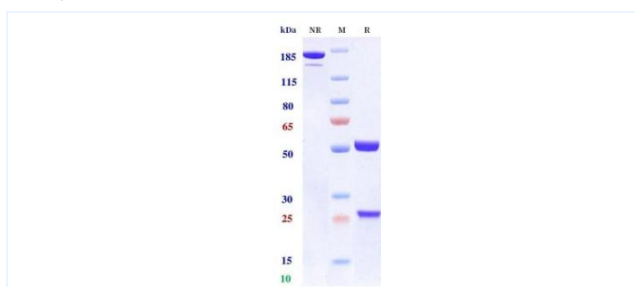


Product Details

Product name:	Anti-EGFR & HER3 (Duligotuzumab Biosimilar)	SKU:	BIO0965SM
Target Name:	EGFR & HER3	Size:	100ug/ 1mg/ 5mg
Target Uniprot:	P00533 & P21860	Concentration:	Lyophilized
Clone#:	Duligotuzumab (Bispecific)	Isotype:	IgG-like
Reactivity:	Human	Calculated M.W.:	144.78 kDa
Application:	ELISA, Bioactivity: FACS, Functional assay, Research in vivo	Endotoxin:	<0.001 EU/ug
Formulation:	100 mM Pro-Ac 20mM Arg pH 5.0	Conjugation:	None
Storage:	-20°C for 2 years under sterile conditions; -20°C for 1 year under sterile conditions; Avoid repeated freeze-thaw cycles.	Expression System:	CHO
Reconstitution:	Dissolve with sterile ddH₂O	Purification:	Protein A

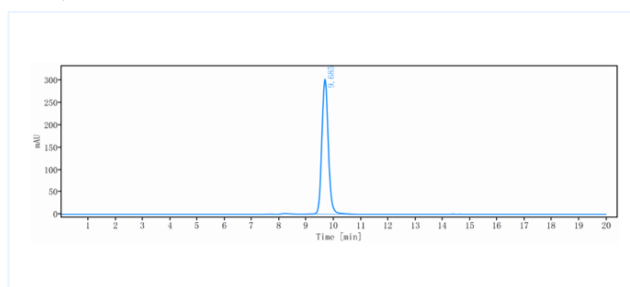
Data

Purity: SDS-PAGE



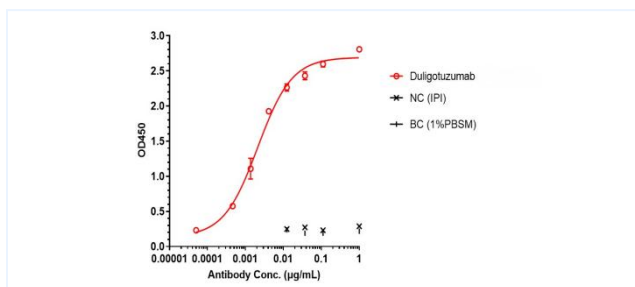
Anti-EGFR & HER3 Reference Antibody (Duligotuzumab) on SDS-PAGE under reducing (R) condition. The purity of the protein is greater than 95%.

Purity: SEC-HPLC



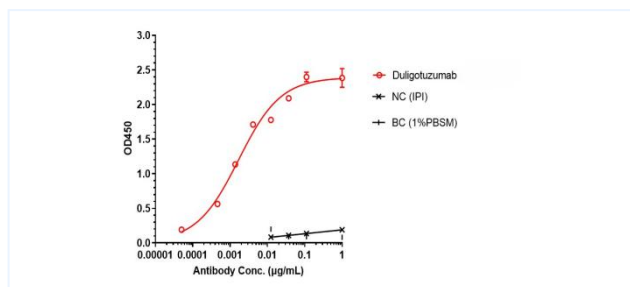
The purity of Anti-EGFR & HER3 Reference Antibody (Duligotuzumab (USAN)) is 100%, determined by SEC-HPLC.

ELISA



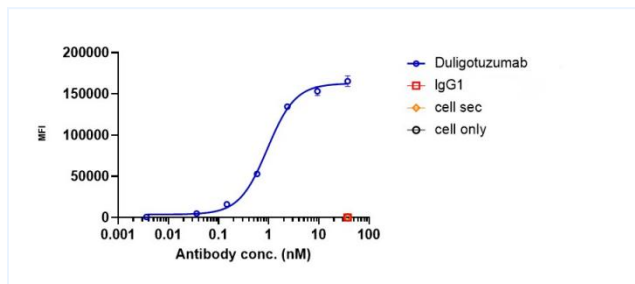
Duligotuzumab bound to EGFR protein, and then rebounded to secondary antibodies(Anti-Human-IgG-Fc-HRP), and read OD450. As shown in fig, Duligotuzumab bound to Human EGFR-his, and the EC₅₀ was 0.002 nM.

ELISA



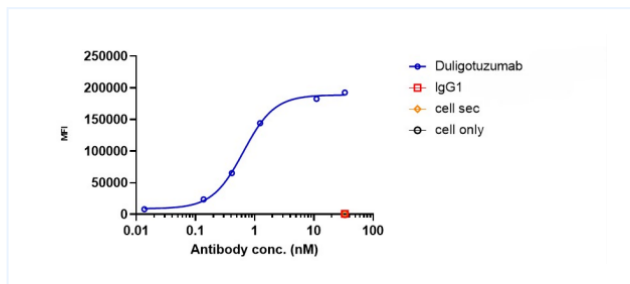
Duligotuzumab bound to HER3 protein, and then rebounded to secondary antibodies(Anti-Human-IgG-Fc-HRP), and read OD450. As shown in fig, Duligotuzumab bound to Human-HER3-his, and the EC₅₀ was 0.002 nM.

Bioactivity: FACS



Duligotuzumab bound to EGFR-CHO-K cells, and then rebounded to fluorescent secondary antibodies(Anti-Human IgG, Fcy PE) , and test by flow cytometry. As shown in fig, Duligotuzumab bound to EGFR-CHO-K cells, and the EC50 was 0.937 nM.

Bioactivity: FACS



Duligotuzumab bound to 0920-13 Hu-HER3-FL-HEK293-A4 cells, and then rebounded to fluorescent secondary antibodies(Anti-Human IgGFcy PE) , and test by flow cytometry. As shown in fig, Duligotuzumab bound to 0920-13 Hu-HER3-FL-HEK293-A4 cells, and the EC50 was 0.645 nM.