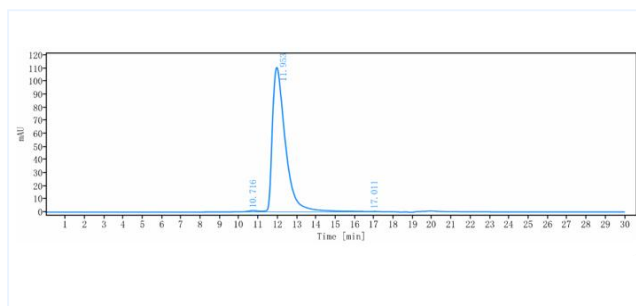


## Product Details

<b>Product name:</b>	Anti-human CLDN18.2 (zolbetuximab MMAE Biosimilar)	<b>SKU:</b>	BIO0951SM
<b>Target Name:</b>	CLDN18.2	<b>Size:</b>	1 mg/5 mg/20 mg
<b>Target Uniprot:</b>		<b>Concentration:</b>	Lyophilized
<b>Clone#:</b>	zolbetuximab MMAE	<b>Isotype:</b>	Human IgG
<b>Reactivity:</b>		<b>Calculated M.W.:</b>	150 kDa
<b>Application:</b>	ELISA, Bioactivity: FACS, Functional assay, Research in vivo	<b>Endotoxin:</b>	<0.001 EU/ug
<b>Formulation:</b>	0.1M Pro, 20mM Arg, pH5.0	<b>Conjugation:</b>	MMAE(ADC)
<b>Storage:</b>	For long term storage, the produce should be stored at -20° C or lower.	<b>Expression System:</b>	CHO
<b>Reconstitution:</b>	Dissolve with sterile ddH2O	<b>Purification:</b>	Protein A

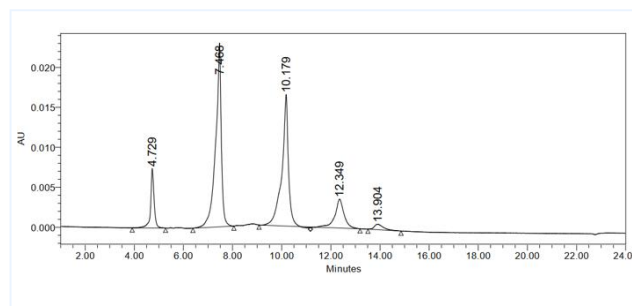
## Data

### Purity: SEC-HPLC



The purity of Anti-CLDN18.2 (zolbetuximabMMAE) is 98.81% , determined by SEC-HPLC.

### HIC-HPLC



MMAE is conjugated by sulfhydryl couplingthe DAR value of Anti-CLDN18.2 (zolbetuximab MMAE)) is 3.1