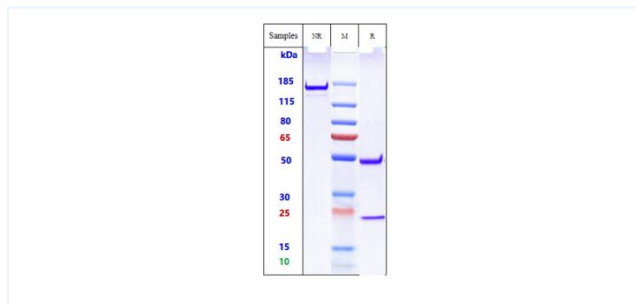


Product Details

Product name:	Anti-human TREM2 (PY314 Biosimilar)	SKU:	BIO0930SM
Target Name:	TREM2	Size:	1 mg/5 mg/20 mg
Target Uniprot:	Q9NZC2	Concentration:	Lyophilized
Clone#:	PY314	Isotype:	Human IgG1
Reactivity:	Human	Calculated M.W.:	145.4 kDa
Application:	ELISA, Bioactivity: FACS, Functional assay, Research in vivo	Endotoxin:	<0.001 EU/ug
Formulation:	0.1M Pro, 20mM Arg, pH5.0	Conjugation:	None
Storage:	For long term storage, the produce should be stored at -20° C or lower.	Expression System:	CHO
Reconstitution:	Dissolve with sterile ddH2O	Purification:	Protein A

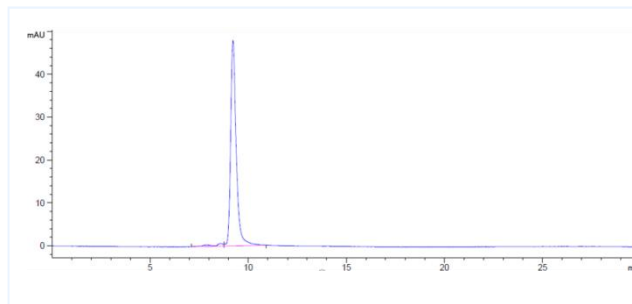
Data

Purity:SDS-PAGE



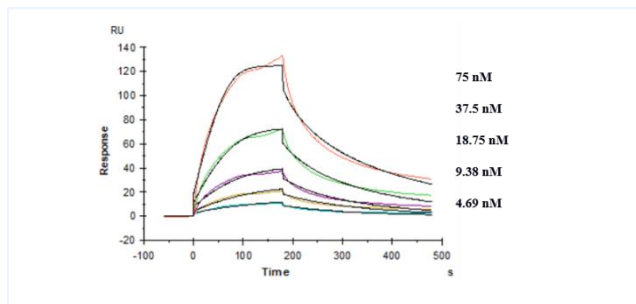
Anti-TREM2 (Py314) on SDS-PAGE under reducing (R) condition. The purity of the protein is greater than 95%.

Purity:SEC-HPLC



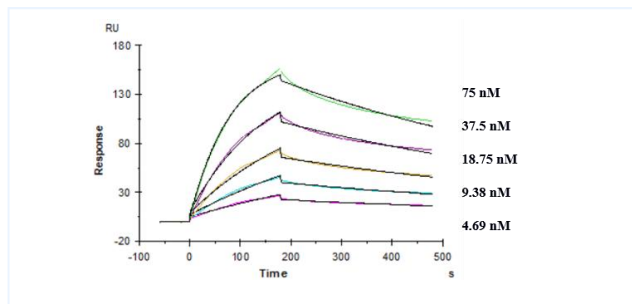
The purity of Anti-TREM2 (Py314) is 97.69%,determined by SEC-HPLC.

Kinetics (SPR)



Affinity constant of 1.61E-08 M as determined in SPR assay.Human TREM2 , His Tag

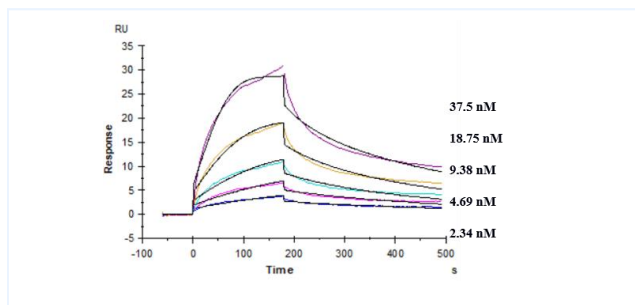
Kinetics (SPR)



Affinity constant of 7.77E-09 M as determined in SPR assay.Mouse TREM2 , His Tag

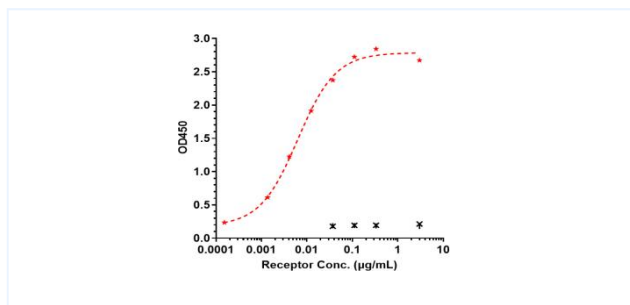
Important Note: This product as supplied is intended for research use only, not for use in human, therapeutic or diagnostic applications.

Kinetics (SPR)



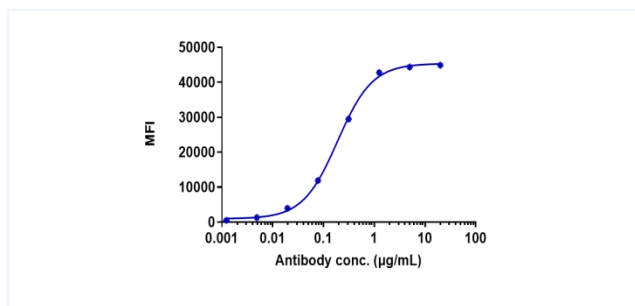
Affinity constant of 4.56×10^{-9} M as determined in SPR assay. Cynomolgus / Rhesus Macaque TREM2, His Tag

Bioactivity:ELISA



Immobilized Ma TREM2 His at 2 µg/mL can bind Anti-TREM2 (Py314), $EC_{50} = 0.0063$ µg/mL.

Bioactivity:FACS



Human TREM2 CHO-K1 cells were stained with Anti-TREM2 (Py314) and negative control protein respectively, washed and then followed by PE and analyzed with FACS, $EC_{50} = 0.1896$ µg/mL.