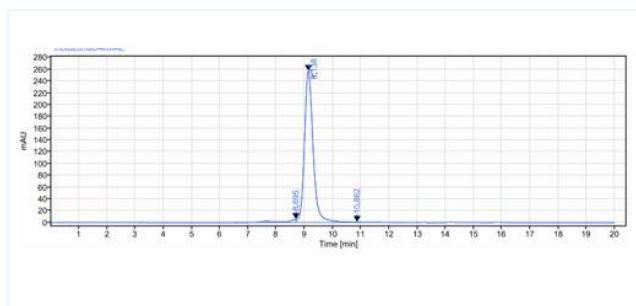


Product Details

Product name:	Anti-human Siglec-2 / CD22 (inotuzumab-MMAE Biosimilar)	SKU:	BIO0907SM
Target Name:	Siglec-2 / CD22	Size:	1 mg/5 mg/20 mg
Target Uniprot:	P20273	Concentration:	Lyophilized
Clone#:	inotuzumab-MMAE	Isotype:	Human IgG4
Reactivity:	Human	Calculated M.W.:	145 kDa
Application:	ELISA, Bioactivity: FACS, Functional assay, Research in vivo	Endotoxin:	<0.001 EU/ug
Formulation:	0.1M Pro, 20mM Arg, pH5.0	Conjugation:	MMAE(ADC)
Storage:	For long term storage, the produce should be stored at -20° C or lower.	Expression System:	CHO
Reconstitution:	Dissolve with sterile ddH2O	Purification:	Protein A

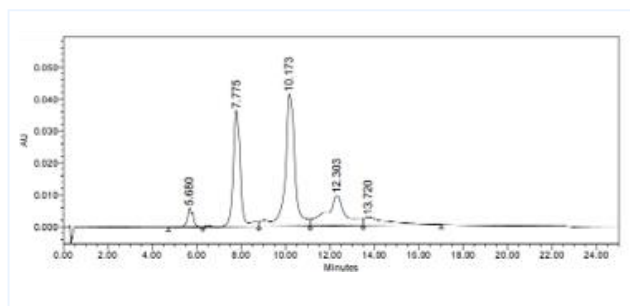
Data

Purity: SEC-HPLC



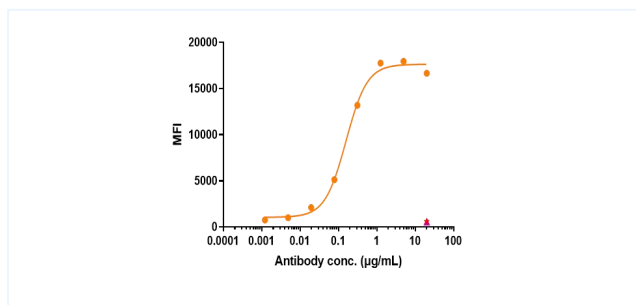
The purity of Anti-Siglec-2 / CD22 (inotuzumab-MMAE) is more than 95%, determined by SEC-HPLC.

HIC-HPLC



The drug-to-antibody ratio (DAR) of the Anti-Siglec-2 / CD22 (inotuzumab-MMAE) is 4.0.

Bioactivity: FACS



Human Siglec-2 / CD22 HEK293 Cell Line were stained with Anti-Siglec-2 / CD22 (inotuzumab-MMAE) and negative control protein respectively, washed and then followed by PE and analyzed with FACS, The EC50 is 0.16 g/mL.