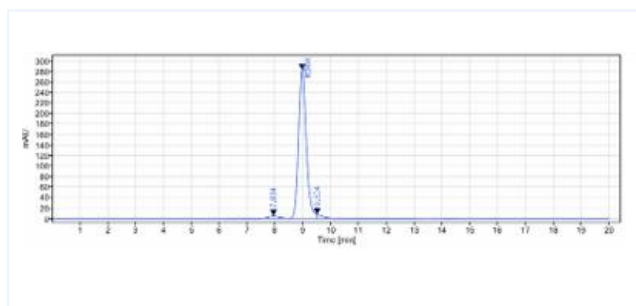


Product Details

Product name:	Anti-human FOLH1 / PSMA (rosopatamab-MMAE Biosimilar)	SKU:	BIO0892SM
Target Name:	FOLH1 / PSMA	Size:	1 mg/5 mg/20 mg
Target Uniprot:	Q04609	Concentration:	Lyophilized
Clone#:	rosopatamab-MMAE	Isotype:	Human IgG1
Reactivity:	Human	Calculated M.W.:	149.6 kDa
Application:	ELISA, Bioactivity: FACS, Functional assay, Research in vivo	Endotoxin:	<0.001 EU/ug
Formulation:	0.1M Pro, 20mM Arg, pH5.0	Conjugation:	MMAE(ADC)
Storage:	For long term storage, the produce should be stored at -20° C or lower.	Expression System:	CHO
Reconstitution:	Dissolve with sterile ddH2O	Purification:	Protein A

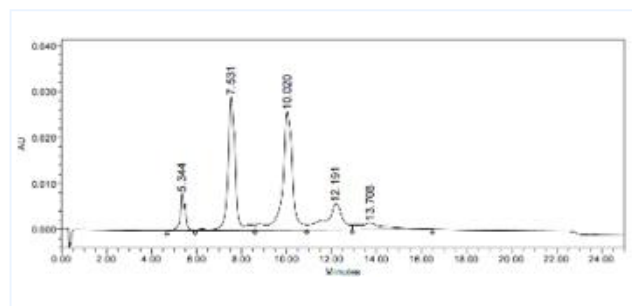
Data

Purity:SEC-HPLC



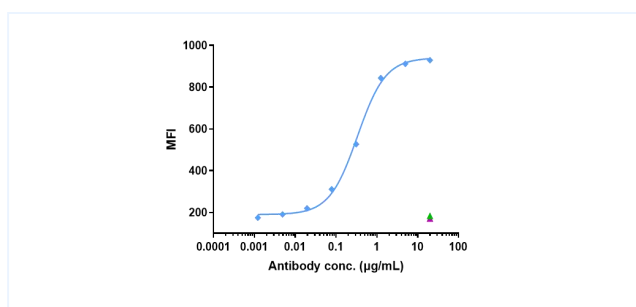
The purity of Anti-FOLH1 / PSMA (rosopatamab-MMAE) is more than 95%, determined by SEC-HPLC.

HIC-HPLC



The drug-to-antibody ratio (DAR) of the Anti-FOLH1 / PSMA (rosopatamab-MMAE) is 3.6.

FACS



THP-1 Cell Line were stained Anti-FOLH1 / PSMA (rosopatamab-MMAE) and negative control protein respectively, washed and then followed by PE and analyzed with FACS, The EC50 is 0.34 ug/mL.