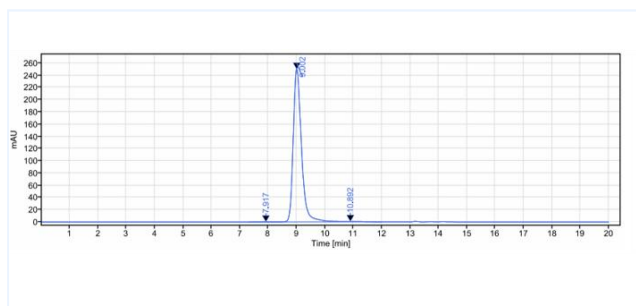


## Product Details

<b>Product name:</b>	Anti-human Mesothelin (anetumab-MMAE Biosimilar)	<b>SKU:</b>	BIO0888SM
<b>Target Name:</b>	Mesothelin	<b>Size:</b>	1 mg/5 mg/20 mg
<b>Target Uniprot:</b>	Q13421	<b>Concentration:</b>	Lyophilized
<b>Clone#:</b>	anetumab-MMAE	<b>Isotype:</b>	Human IgG1
<b>Reactivity:</b>	Human	<b>Calculated M.W.:</b>	145 kDa
<b>Application:</b>	ELISA, Bioactivity: FACS, Functional assay, Research in vivo	<b>Endotoxin:</b>	<0.001 EU/ug
<b>Formulation:</b>	0.1M Pro, 20mM Arg, pH5.0	<b>Conjugation:</b>	MMAE(ADC)
<b>Storage:</b>	For long term storage, the produce should be stored at -20° C or lower.	<b>Expression System:</b>	CHO
<b>Reconstitution:</b>	Dissolve with sterile ddH2O	<b>Purification:</b>	Protein A

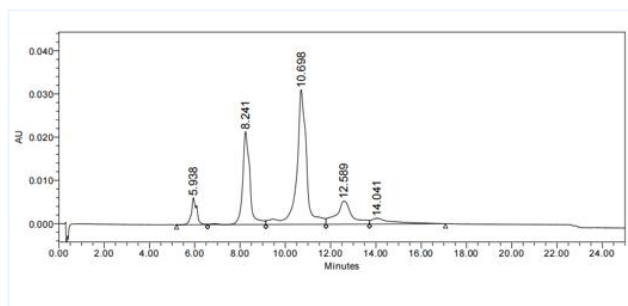
## Data

### SEC-HPLC



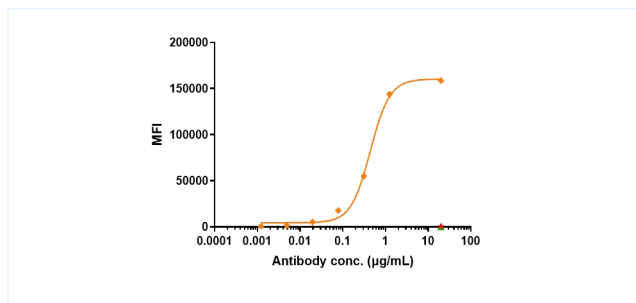
The purity of Anti-Mesothelin (anetumab-MMAE), determined by HPLC, is 99.12%.

### ELISA



The drug-to-antibody ratio (DAR) of the Anti-Mesothelin (anetumab-MMAE) is 3.7.

### FACS



Human Mesothelin CHO Cell Line were stained Anti-Mesothelin (anetumab-MMAE) and negative control protein respectively, washed and then followed by PE and analyzed with FACS, The EC50 is 0.49 ug/mL.