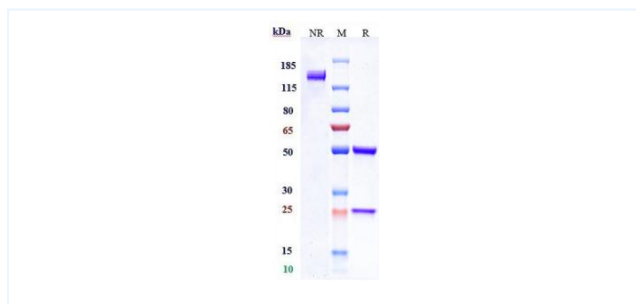


Product Details

| | | | |
|-----------------|---|--------------------|-----------------|
| Product name: | Anti-human GUCY2C (Indusatumab vedotin Biosimilar) | SKU: | BIO0873SM |
| Target Name: | GUCY2C | Size: | 1 mg/5 mg/20 mg |
| Target Uniprot: | P25092 | Concentration: | Lyophilized |
| Clone#: | Indusatumab vedotin | Isotype: | Human IgG1 |
| Reactivity: | Human | Calculated M.W.: | 150.45 kDa |
| Application: | ELISA, Bioactivity: FACS, Functional assay, Research in vivo | Endotoxin: | <0.001 EU/ug |
| Formulation: | 0.1M Pro, 20mM Arg, pH5.0 | Conjugation: | MMAE(ADC) |
| Storage: | For long term storage, the produce should be stored at -20° C or lower. | Expression System: | CHO |
| Reconstitution: | Dissolve with sterile ddH2O | Purification: | Protein A |

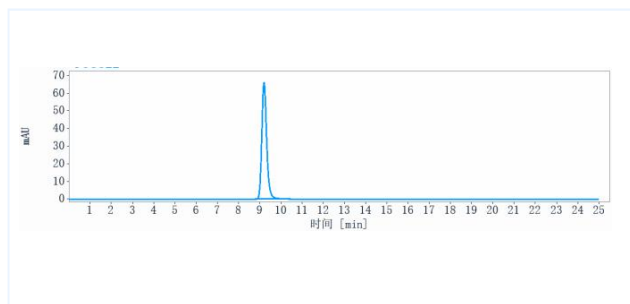
Data

Purity: SDS-PAGE



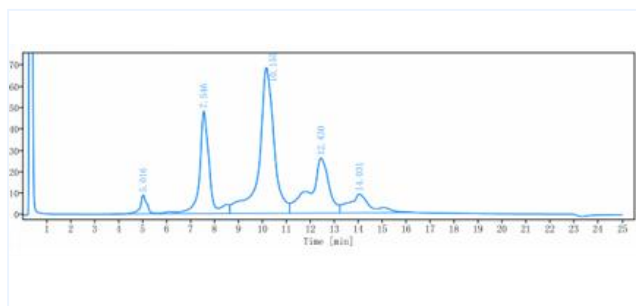
Anti-GUCY2C (indusatumab vedotin) on SDS-PAGE under reducing (R) condition. The purity of the protein is greater than 95%.

Purity: SEC-HPLC



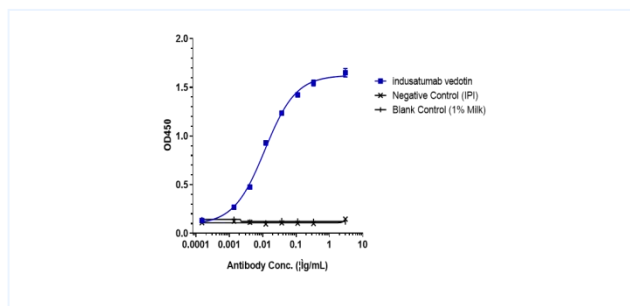
The purity of Anti-GUCY2C (indusatumab vedotin) is more than 95%, determined by SEC-HPLC.

HIC-HPLC



The drug-to-antibody ratio (DAR) of the Anti-GUCY2C (Indusatumab vedotin) is 4.2.

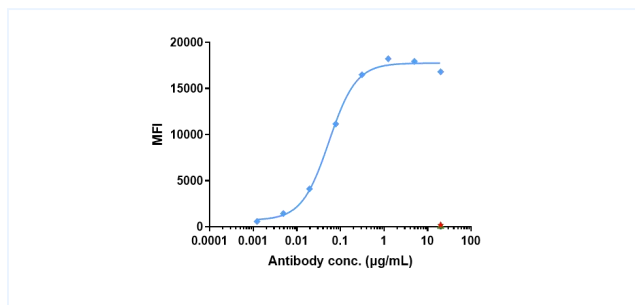
ELISA



Immobilized Human GUCY2C, His Tag at 2 µg/mL can bind Anti-GUCY2C (Indusatumab vedotin), EC₅₀ is 0.01160 µg/mL.

Important Note: This product as supplied is intended for research use only, not for use in human, therapeutic or diagnostic applications.

Bioactivity: FACS



Human GUCY2C CHO Cell Line were stained with Anti-GUCY2C (Indusatumab vedotin) and negative control protein respectively, washed and then followed by PE and analyzed with FACS. The EC50 is 0.05 µg/mL.