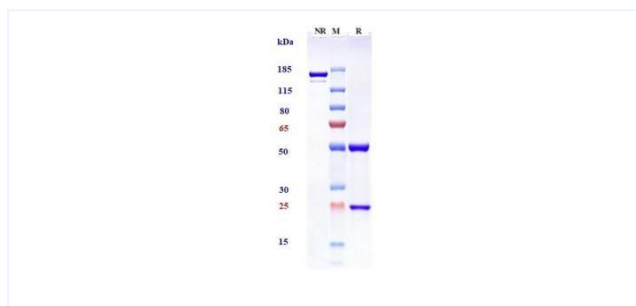


Product Details

Product name:	Anti-human Siglec-2 / CD22 (pinatuzumab Biosimilar)	SKU:	BIO0768SM
Target Name:	Siglec-2 / CD22	Size:	1 mg/5 mg/20 mg
Target Uniprot:	P20273	Concentration:	Lyophilized
Clone#:	pinatuzumab	Isotype:	Human IgG1
Reactivity:	Human	Calculated M.W.:	146.64 kDa
Application:	ELISA, Bioactivity: FACS, Functional assay, Research in vivo	Endotoxin:	<0.001 EU/ug
Formulation:	0.1M Pro, 20mM Arg, pH5.0	Conjugation:	None
Storage:	For long term storage, the produce should be stored at -20° C or lower.	Expression System:	CHO
Reconstitution:	Dissolve with sterile ddH2O	Purification:	Protein A

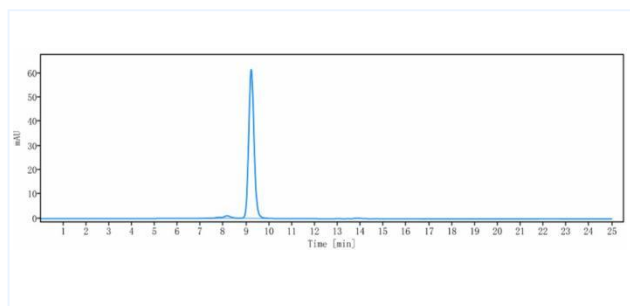
Data

Purity:SDS-PAGE



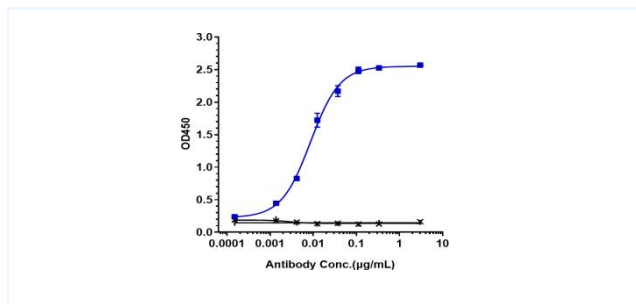
Anti-Siglec-2 / CD22 (pinatuzumab) on SDS-PAGE under reducing (R) condition. The purity of the protein is greater than 95%.

Purity:SEC-HPLC



The purity of Anti-Siglec-2 / CD22(pinatuzumab) is 97.02%, determined by SEC-HPLC.

Bioactivity:ELISA



Immobilized human CD22 His at 2 ug/mL can bind Anti-Siglec-2 / CD22 (pinatuzumab), EC50=0.008601 ug/mL.