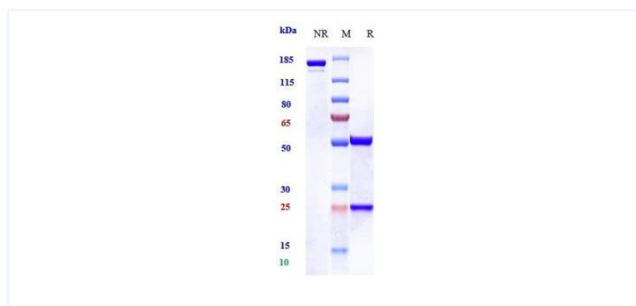


## Product Details

|                 |   |                    |                 |
|-----------------|---|--------------------|-----------------|
| Product name:   | Anti-human PAC1 (zelminemab Biosimilar)                                 | SKU:               | BIO0720SM       |
| Target Name:    | PAC1  | Size:              | 1 mg/5 mg/20 mg |
| Target Uniprot: | Q05923  | Concentration:     | Lyophilized     |
| Clone#:         | zelminemab  | Isotype:           | Human IgG1      |
| Reactivity:     | Human   | Calculated M.W.:   | 145 kDa         |
| Application:    | ELISA, Bioactivity: FACS, Functional assay, Research in vivo            | Endotoxin:         | <0.001 EU/ug    |
| Formulation:    | 0.1M Pro, 20mM Arg, pH5.0   | Conjugation:       | None            |
| Storage:        | For long term storage, the produce should be stored at -20° C or lower. | Expression System: | CHO             |
| Reconstitution: | Dissolve with sterile ddH2O   | Purification:      | Protein A       |

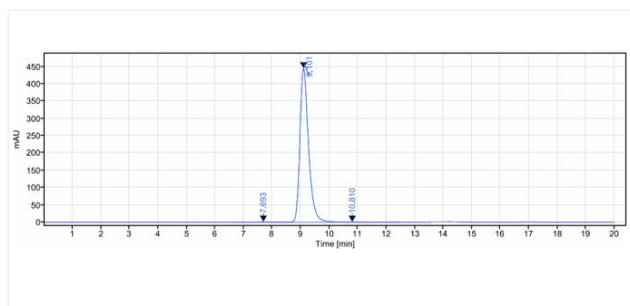
## Data

### Purity:SDS-PAGE



Anti-PAC1 (zelminemab) on SDS-PAGE underreducing (R) condition. The purity of the protein is greater than 95%.

### Purity:SEC-HPLC



The purity of Anti-PAC1 (zelminemab) is 99.15%, determined by SEC-HPLC.