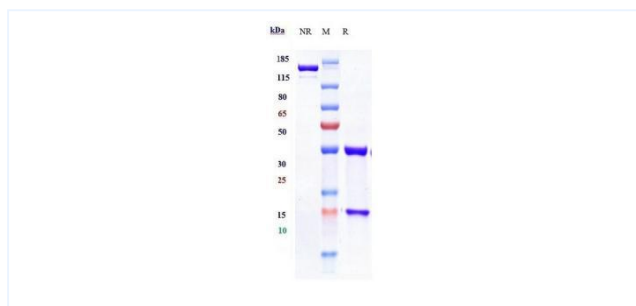


Product Details

Product name:	Anti-human CSF2 / GM-CSF (otilimab Biosimilar)	SKU:	BIO0709SM
Target Name:	CSF2 / GM-CSF	Size:	1 mg/5 mg/20 mg
Target Uniprot:		Concentration:	Lyophilized
Clone#:	otilimab	Isotype:	Human IgG1
Reactivity:	Human	Calculated M.W.:	145.5 kDa
Application:	ELISA, Bioactivity: FACS, Functional assay, Research in vivo	Endotoxin:	<0.001 EU/ug
Formulation:	0.1M Pro, 20mM Arg, pH5.0	Conjugation:	None
Storage:	For long term storage, the produce should be stored at -20° C or lower.	Expression System:	CHO
Reconstitution:	Dissolve with sterile ddH2O	Purification:	Protein A

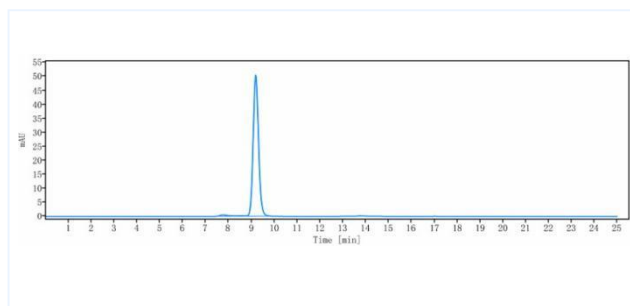
Data

Purity: SDS-PAGE



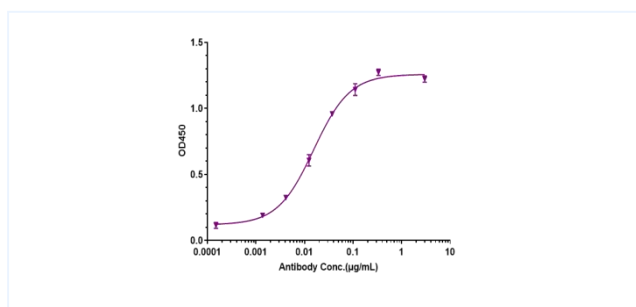
Anti-CSF2 / GM-CSF (otilimab) on SDS-PAGE under reducing (R) condition. The purity of the protein is greater than 90%.

Purity: SEC-HPLC



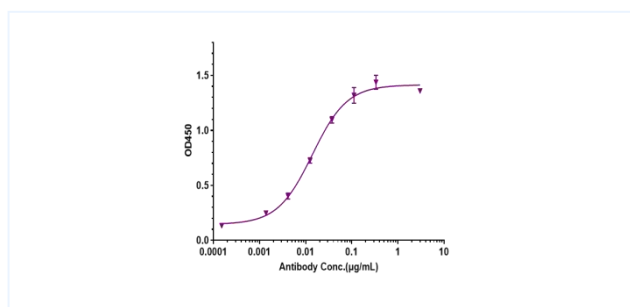
The purity of Anti-CSF2 / GM-CSF (otilimab) is more than 95%, determined by SEC-HPLC.

ELISA



Immobilized Human CSF2 / GM-CSF, His Tag at 2 g/mL can bind Anti-CSF2 / GM-CSF (otilimab), The EC50 was approximately 0.01548 ug/mL.

ELISA



Immobilized Cynomolgus / Rhesus Macaque CSF2 / GM-CSF, hFc Tag at 2 g/mL can bind Anti-CSF2 / GM-CSF (otilimab), The EC50 was approximately 0.01387 ug/mL.