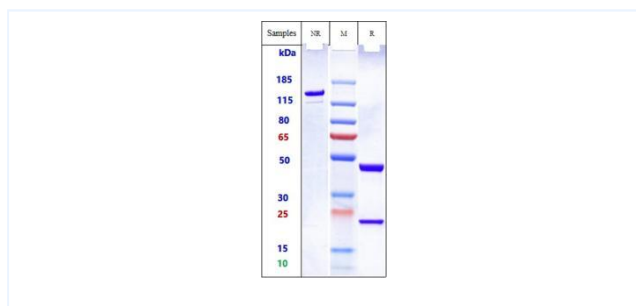


Product Details

Product name:	Anti-human FOLH1 / PSMA (pelgifatamAb Biosimilar)	SKU:	BIO0595SM
Target Name:	FOLH1 / PSMA	Size:	1 mg/5 mg/20 mg
Target Uniprot:	Q04609	Concentration:	Lyophilized
Clone#:	pelgifatamAb	Isotype:	Human IgG1
Reactivity:	Human	Calculated M.W.:	145 kDa
Application:	ELISA, Bioactivity: FACS, Functional assay, Research in vivo	Endotoxin:	<0.001 EU/ug
Formulation:	0.1M Pro, 20mM Arg, pH5.0	Conjugation:	None
Storage:	For long term storage, the produce should be stored at -20° C or lower.	Expression System:	CHO
Reconstitution:	Dissolve with sterile ddH2O	Purification:	Protein A

Data

Purity:SDS-PAGE



Anti-FOLH1 / PSMA (pelgifatamAb) on SDS-PAGE under reducing (R) condition. The purity of the protein is greater than 90%.