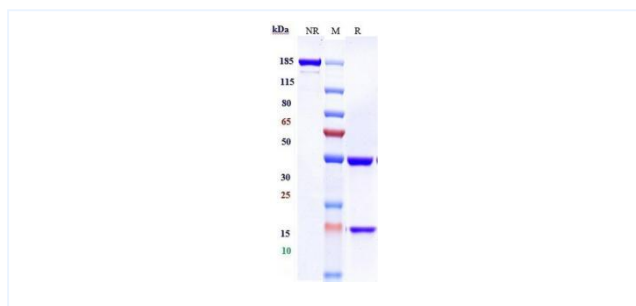


## Product Details

|                        |   |                           |                 |
|------------------------|---|---------------------------|-----------------|
| <b>Product name:</b>   | Anti-human ERBB1 / EGFR / HER1 (laprituximab Biosimilar)                | <b>SKU:</b>               | BIO0571SM       |
| <b>Target Name:</b>    | ERBB1 / EGFR / HER1   | <b>Size:</b>              | 1 mg/5 mg/20 mg |
| <b>Target Uniprot:</b> | P00533  | <b>Concentration:</b>     | Lyophilized     |
| <b>Clone#:</b>         | laprituximab  | <b>Isotype:</b>           | Human IgG1      |
| <b>Reactivity:</b>     | Human   | <b>Calculated M.W.:</b>   | 145.2 kDa       |
| <b>Application:</b>    | ELISA, Bioactivity: FACS, Functional assay, Research in vivo            | <b>Endotoxin:</b>         | <0.001 EU/ug    |
| <b>Formulation:</b>    | 0.1M Pro, 20mM Arg, pH5.0   | <b>Conjugation:</b>       | None            |
| <b>Storage:</b>        | For long term storage, the produce should be stored at -20° C or lower. | <b>Expression System:</b> | CHO             |
| <b>Reconstitution:</b> | Dissolve with sterile ddH2O   | <b>Purification:</b>      | Protein A       |

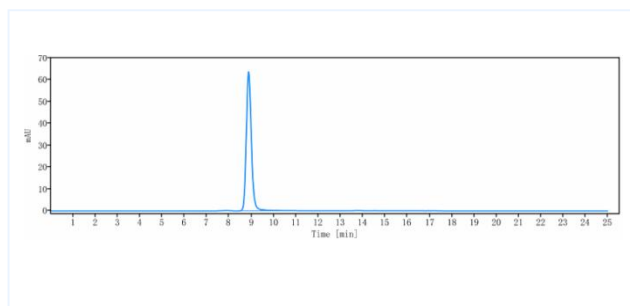
## Data

### Purity:SDS-PAGE



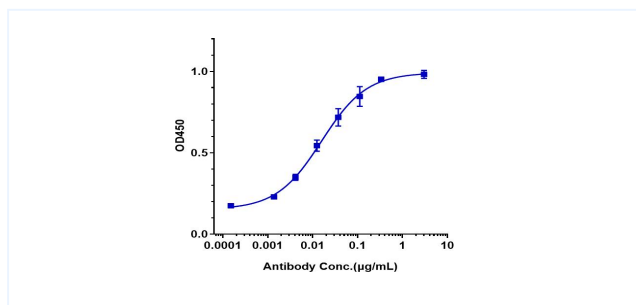
Anti-ERBB1 / EGFR / HER1 (laprituximAb) on SDS-PAGE under reducing (R) condition. The purity of the protein is greater than 95%.

### Purity:SEC-HPLC



The purity of Anti-ERBB1 / EGFR / HER1 (laprituximAb) is 98.97%, determined by SEC-HPLC.

### Bioactivity:ELISA



Immobilized human EGFR His at 2 µg/mL can bind Anti-ERBB1 / EGFR / HER1 (laprituximAb),  $EC_{50}=0.01573\mu\text{g/mL}$ .