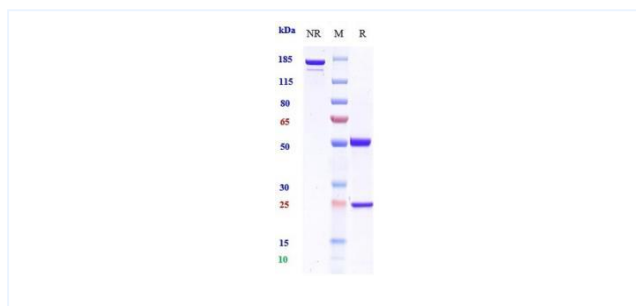


Product Details

Product name:	Anti-human CSF2 / GM-CSF (namilumab Biosimilar)	SKU:	BIO0528SM
Target Name:	CSF2 / GM-CSF	Size:	1 mg/5 mg/20 mg
Target Uniprot:	P04141	Concentration:	Lyophilized
Clone#:	namilumab	Isotype:	Human IgG1
Reactivity:	Human	Calculated M.W.:	145.78 kDa
Application:	ELISA, Bioactivity: FACS, Functional assay, Research in vivo	Endotoxin:	<0.001 EU/ug
Formulation:	0.1M Pro, 20mM Arg, pH5.0	Conjugation:	None
Storage:	For long term storage, the produce should be stored at -20° C or lower.	Expression System:	CHO
Reconstitution:	Dissolve with sterile ddH2O	Purification:	Protein A

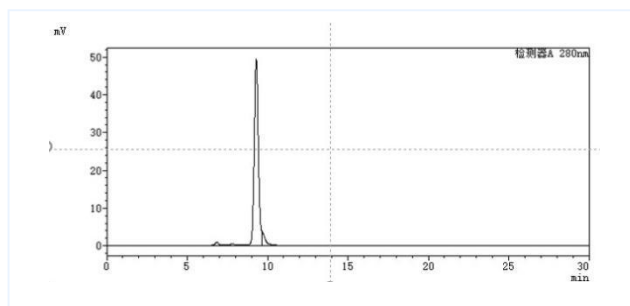
Data

Purity:SDS-PAGE



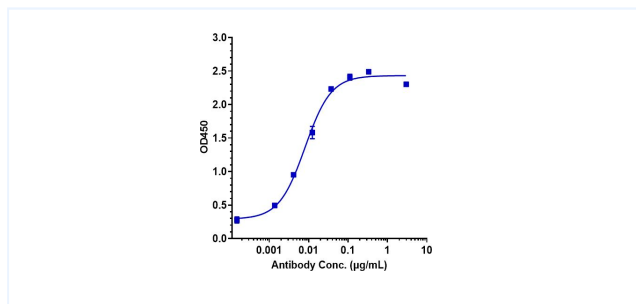
Anti-CSF2 / GM-CSF (namilumab) on SDS-PAGE under reducing (R) condition. The purity of the protein is greater than 90%.

Purity:SEC-HPLC



The purity of Anti-CSF2 / GM-CSF(namilumab) is 90.29%, determined by SEC-HPLC.

Bioactivity:ELISA



Immobilized human GM-CSF Nhis at 2 µg/mL can bind Anti-CSF2 / GM-CSF (namilumab), EC₅₀=0.008074 µg/mL.