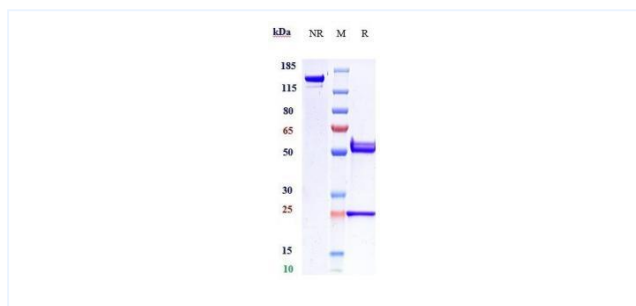


## Product Details

<b>Product name:</b>	<b>Anti-human Amyloid Beta (DLX212 Biosimilar)</b>	<b>SKU:</b>	<b>BIO0413SM</b>
<b>Target Name:</b>	<b>Amyloid Beta</b>	<b>Size:</b>	<b>1 mg/5 mg/20 mg</b>
<b>Target Uniprot:</b>	<b>P05067</b>	<b>Concentration:</b>	<b>Lyophilized</b>
<b>Clone#:</b>	<b>DLX212</b>	<b>Isotype:</b>	<b>Human IgG1</b>
<b>Reactivity:</b>	<b>Human</b>	<b>Calculated M.W.:</b>	<b>145.74 kDa</b>
<b>Application:</b>	<b>ELISA, Bioactivity: FACS, Functional assay, Research in vivo</b>	<b>Endotoxin:</b>	<b>&lt;0.001 EU/ug</b>
<b>Formulation:</b>	<b>0.1M Pro, 20mM Arg, pH5.0</b>	<b>Conjugation:</b>	<b>None</b>
<b>Storage:</b>	<b>For long term storage, the produce should be stored at -20° C or lower.</b>	<b>Expression System:</b>	<b>CHO</b>
<b>Reconstitution:</b>	<b>Dissolve with sterile ddH2O</b>	<b>Purification:</b>	<b>Protein A</b>

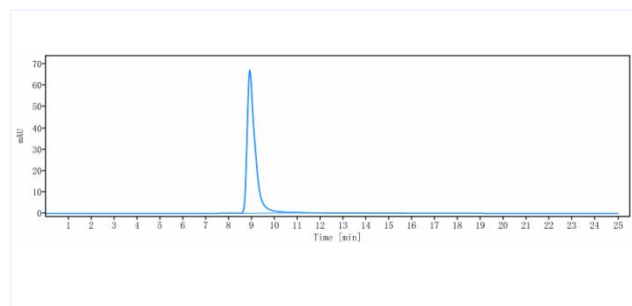
## Data

### Purity:SDS-PAGE



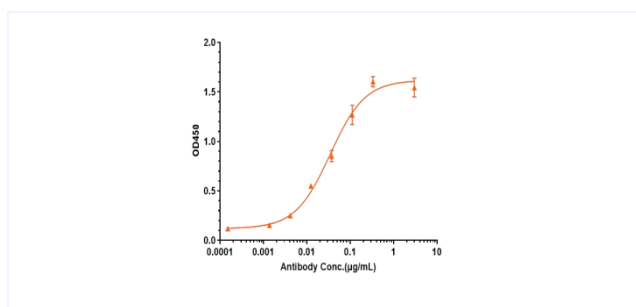
Anti-Amyloid Beta (DLX212) on SDS-PAGE under reducing (R) condition. The purity of the protein is greater than 95%.

### Purity:SEC-HPLC



The purity of Anti-Amyloid Beta (DLX212) is more than 95%, determined by SEC-HPLC.

### ELISA



Immobilized Human Amyloid Beta1-42, No Tag at 2 µg/mL can bind Anti-Amyloid Beta (DLX212), EC<sub>50</sub>=1.499 µg/mL.