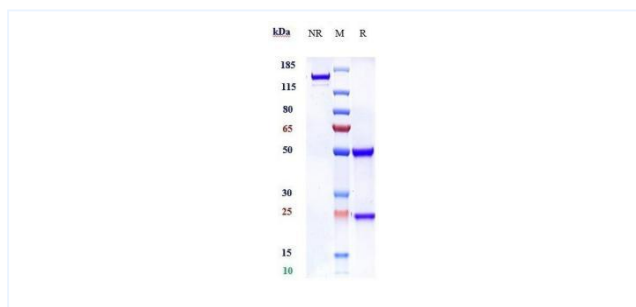


Product Details

Product name:	Anti-human ROBO1 (Asclepius Technology patent Anti-human Robo1 CAR Biosimilar)	SKU:	BIO0282SM
Target Name:	ROBO1	Size:	1 mg/5 mg/20 mg
Target Uniprot:	Q9Y6N7	Concentration:	Lyophilized
Clone#:	Asclepius Technology patent Anti-human Robo1 CAR	Isotype:	Human IgG1
Reactivity:	Human	Calculated M.W.:	150 kDa
Application:	ELISA, Bioactivity: FACS, Functional assay, Research in vivo	Endotoxin:	<0.001 EU/ug
Formulation:	0.1M Pro, 20mM Arg, pH5.0	Conjugation:	None
Storage:	For long term storage, the produce should be stored at -20° C or lower.	Expression System:	CHO
Reconstitution:	Dissolve with sterile ddH2O	Purification:	Protein A

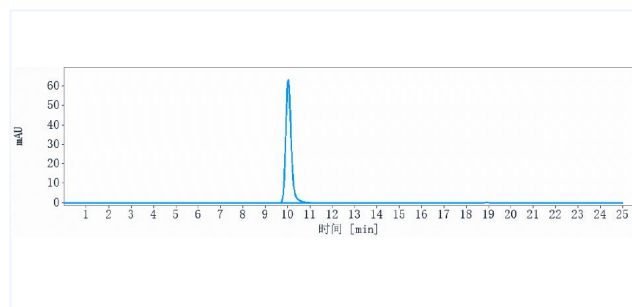
Data

Purity:SDS-PAGE



Anti-ROBO1 (Asclepius Technology patent anti-Robo1 CAR) on SDS-PAGE under reducing (R) condition. Thepurity of the protein is greater than 95%.

Purity:SEC-HPLC



The purity of Anti-ROBO1 (Asclepius Technology patent anti-Robo1 CAR) is more than 95%, determinedby SEC-HPLC.