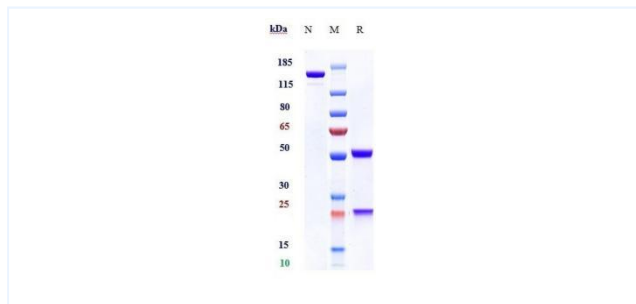


## Product Details

|                 |   |                    |                 |
|-----------------|---|--------------------|-----------------|
| Product name:   | Anti-human SEMA4D / CD100 (pepinemab Biosimilar)                        | SKU:               | BIO0261SM       |
| Target Name:    | SEMA4D / CD100  | Size:              | 1 mg/5 mg/20 mg |
| Target Uniprot: | Q92854  | Concentration:     | Lyophilized     |
| Clone#:         | pepinemab   | Isotype:           | Human IgG4SP    |
| Reactivity:     | Human   | Calculated M.W.:   | 145.88 kDa      |
| Application:    | ELISA, Bioactivity: FACS, Functional assay, Research in vivo            | Endotoxin:         | <0.001 EU/ug    |
| Formulation:    | 0.1M Pro, 20mM Arg, pH5.0   | Conjugation:       | None            |
| Storage:        | For long term storage, the produce should be stored at -20° C or lower. | Expression System: | CHO             |
| Reconstitution: | Dissolve with sterile ddH2O   | Purification:      | Protein A       |

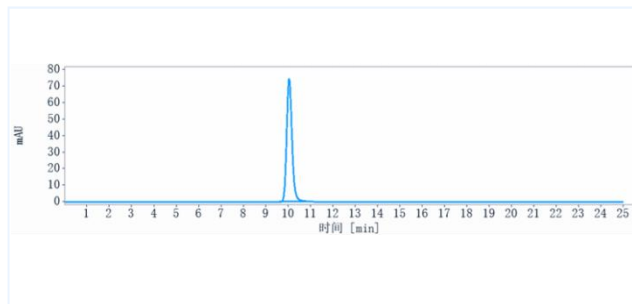
## Data

### Purity:SDS-PAGE



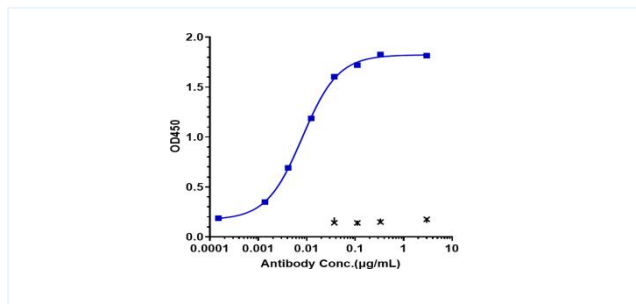
Anti-SEMA4D / CD100 (pepinemab) on SDS-PAGE under reducing (R) condition. The purity of the protein is greater than 95%.

### Purity:SEC-HPLC



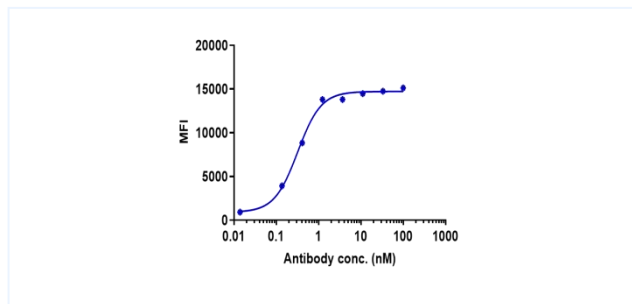
The purity of Anti-SEMA4D / CD100(pepinemab) is 100%, determined by SEC-HPLC.

### Bioactivity:ELISA



Immobilized human SEMA4D/CD100, His Tag at 2 ug/mL can bind Anti-SEMA4D / CD100 (pepinemab), EC50=0.0081 ug/mL.

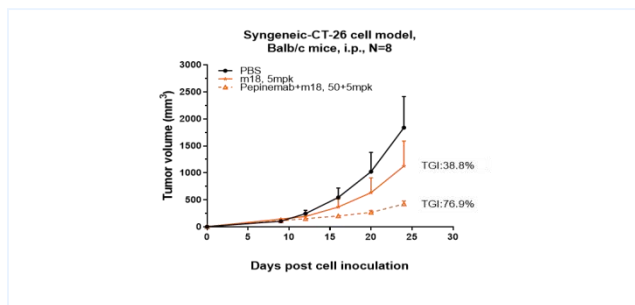
### Bioactivity:FACS



Human C100 HEK293 cells were stained with Anti-SEMA4D / CD100 (pepinemab) and negative control protein respectively, washed and then followed by PE and analyzed with FACS, EC50=0.3227 nM.

**Important Note:** This product as supplied is intended for research use only, not for use in human, therapeutic or diagnostic applications.

## Research in vivo



Pepinemab inhibited the tumor growth of CT26 on balb/c mice. The result showed significant anti-tumor effects, with an tumor inhibition rate (TGI) of 76.9% at 50 mpk at D24.