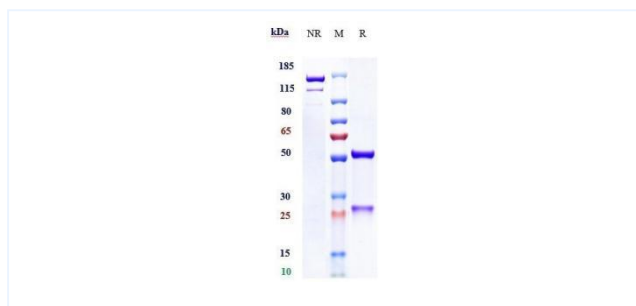


Product Details

Product name:	Anti-human Mesothelin (anetumab Biosimilar)	SKU:	BIO0229SM
Target Name:	Mesothelin	Size:	1 mg/5 mg/20 mg
Target Uniprot:	Q13421	Concentration:	Lyophilized
Clone#:	anetumab	Isotype:	Human IgG1
Reactivity:	Human	Calculated M.W.:	143.8 kDa
Application:	ELISA, Bioactivity: FACS, Functional assay, Research in vivo	Endotoxin:	<0.001 EU/ug
Formulation:	0.1M Pro, 20mM Arg, pH5.0	Conjugation:	None
Storage:	For long term storage, the produce should be stored at -20° C or lower.	Expression System:	CHO
Reconstitution:	Dissolve with sterile ddH2O	Purification:	Protein A

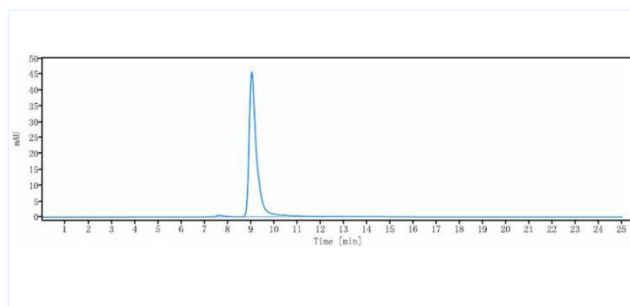
Data

Purity:SDS-PAGE



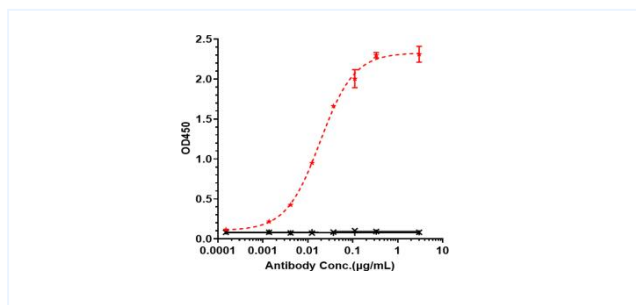
Anti-Mesothelin (anetumab) on SDS-PAGE under reducing (R) condition. The purity of the protein is greater than 95%.

Purity:SEC-HPLC



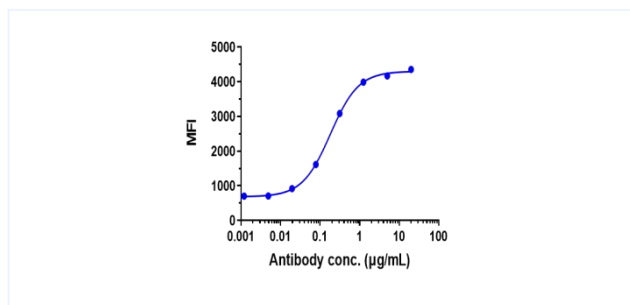
The purity of Anti-Mesothelin (anetumab) is 98.58%, determined by SEC-HPLC.

Bioactivity:ELISA



Immobilized human Mesothelin His at 2 ug/mL can bind Anti-Mesothelin (anetumab), EC50=0.01877ug/mL.

Bioactivity:FACS



ASPC-1 cells were stained with Anti-Mesothelin (anetumab) and negative control protein respectively, washed and then followed by PE and analyzed with FACS, EC50=0.1822 ug/mL.