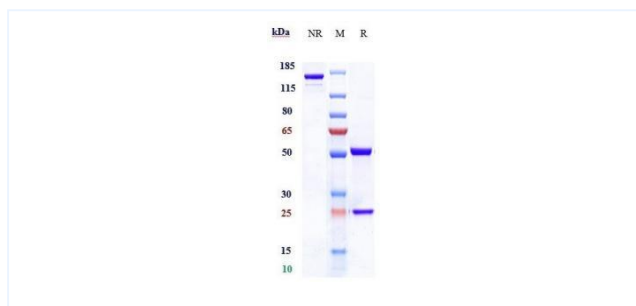


Product Details

| | | | |
|------------------------|---|---------------------------|-----------------|
| Product name: | Anti-human Siglec-4a / MAG (refanezumab Biosimilar) | SKU: | BIO0224SM |
| Target Name: | Siglec-4a / MAG | Size: | 1 mg/5 mg/20 mg |
| Target Uniprot: | P20916 | Concentration: | Lyophilized |
| Clone#: | refanezumab | Isotype: | Human IgG1 |
| Reactivity: | Human | Calculated M.W.: | 148.36 kDa |
| Application: | ELISA, Bioactivity: FACS, Functional assay, Research in vivo | Endotoxin: | <0.001 EU/ug |
| Formulation: | 0.1M Pro, 20mM Arg, pH5.0 | Conjugation: | None |
| Storage: | For long term storage, the produce should be stored at -20° C or lower. | Expression System: | CHO |
| Reconstitution: | Dissolve with sterile ddH2O | Purification: | Protein A |

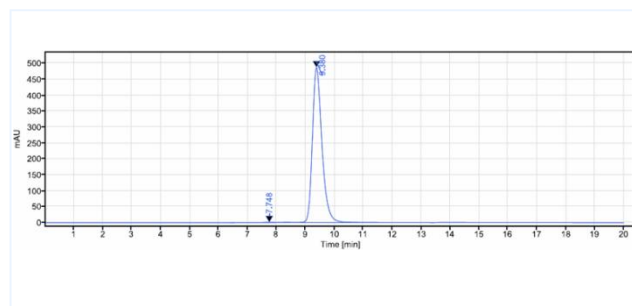
Data

Purity:SDS-PAGE



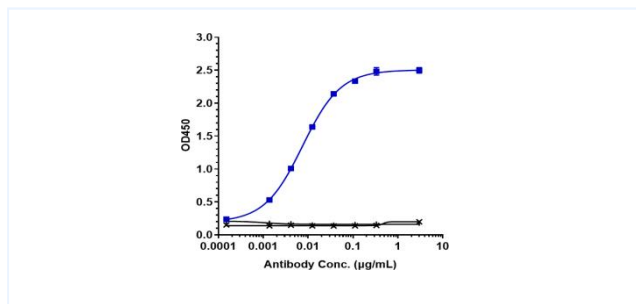
Anti-Siglec-4a / MAG (refanezumab) on SDS-PAGE under reducing (R) condition. The purity of the protein is greater than 90%.

Purity:SEC-HPLC



The purity of Anti-Siglec-4a / MAG(refanezumab) is 99.41%, determined by SEC-HPLC.

Bioactivity:ELISA



Immobilized human Siglec 4a / MAG, Fc Tag at 2 ug/mL can bind Anti-Siglec-4a / MAG (refanezumab), EC50=0.007489 ug/mL.