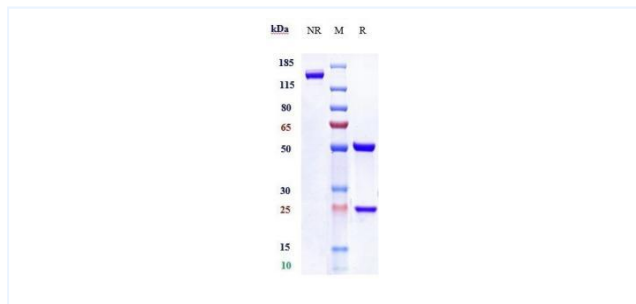


Product Details

Product name:	Anti-human LAG3 / CD223 (relatlimab Biosimilar)	SKU:	BIO0217SM
Target Name:	LAG3 / CD223	Size:	1 mg/5 mg/20 mg
Target Uniprot:	P18627	Concentration:	Lyophilized
Clone#:	relatlimab	Isotype:	Human IgG4SP
Reactivity:	Human, Cynomolgus	Calculated M.W.:	145.58 kDa
Application:	ELISA, Bioactivity: FACS, Functional assay, Research in vivo	Endotoxin:	<0.001 EU/ug
Formulation:	0.1M Pro, 20mM Arg, pH5.0	Conjugation:	None
Storage:	For long term storage, the produce should be stored at -20° C or lower.	Expression System:	CHO
Reconstitution:	Dissolve with sterile ddH2O	Purification:	Protein A

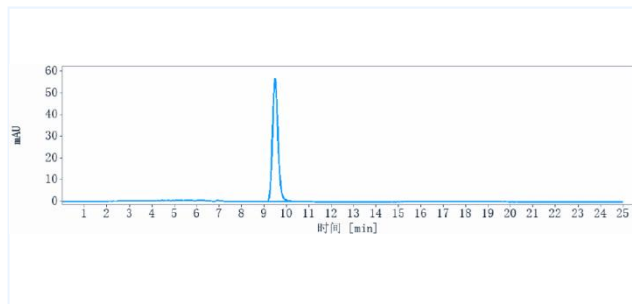
Data

Purity:SDS-PAGE



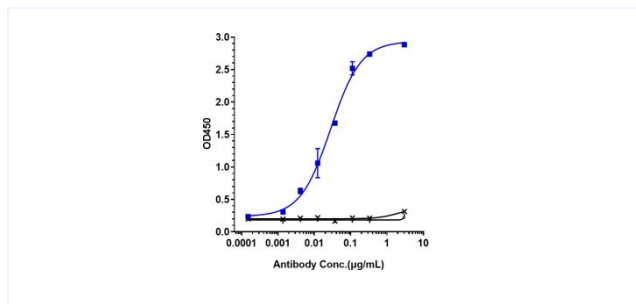
Anti-LAG3 / CD223 (relatlimab) on SDS-PAGE under reducing (R) condition. The purity of the protein is greater than 95%.

Purity:SEC-HPLC



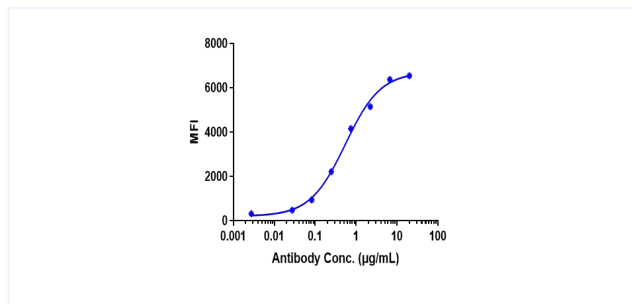
The purity of Anti-LAG3 / CD223 (relatlimab) is 100%, determined by SEC-HPLC.

Bioactivity:ELISA



Immobilized human LAG3 His at 2 ug/mL can bind Anti-LAG3 / CD223 (relatlimab), EC50=0.02812 ug/mL.

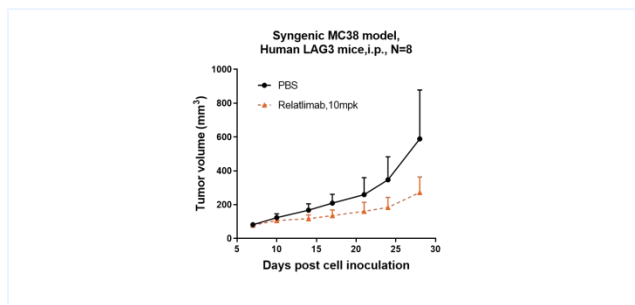
Bioactivity:FACS



Human LAG3 CHO cells were stained with Anti-LAG3 / CD223 (relatlimab) and negative control protein respectively, washed and then followed by PE and analyzed with FACS, EC50=0.5464 ug/mL.

Important Note: This product as supplied is intended for research use only, not for use in human, therapeutic or diagnostic applications.

Research in vivo



Relatlimab inhibited the tumor growth of MC38 on Human LAG3 mice. The result showed significant anti-tumor effects, with an tumor inhibition rate (TGI) of 53.8% at 10 mpk at D28.