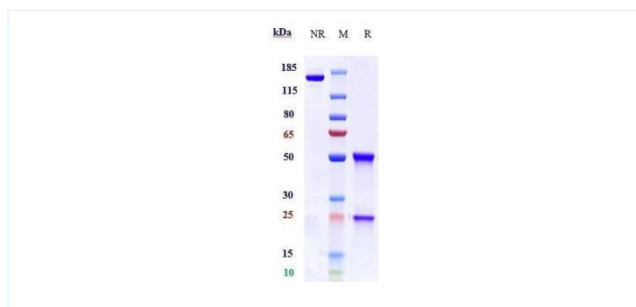


## Product Details

<b>Product name:</b>	Anti-human KIR2DL1 / CD158a (Innate patent Anti-human KIR2DL Biosimilar)	<b>SKU:</b>	BIO0216SM
<b>Target Name:</b>	KIR2DL1 / CD158a	<b>Size:</b>	1 mg/5 mg/20 mg
<b>Target Uniprot:</b>	P43626	<b>Concentration:</b>	Lyophilized
<b>Clone#:</b>	Innate patent Anti-human KIR2DL	<b>Isotype:</b>	Human IgG1
<b>Reactivity:</b>	Human	<b>Calculated M.W.:</b>	150 kDa
<b>Application:</b>	ELISA, Bioactivity: FACS, Functional assay, Research in vivo	<b>Endotoxin:</b>	<0.001 EU/ug
<b>Formulation:</b>	0.1M Pro, 20mM Arg, pH5.0	<b>Conjugation:</b>	None
<b>Storage:</b>	For long term storage, the produce should be stored at -20° C or lower.	<b>Expression System:</b>	CHO
<b>Reconstitution:</b>	Dissolve with sterile ddH2O	<b>Purification:</b>	Protein A

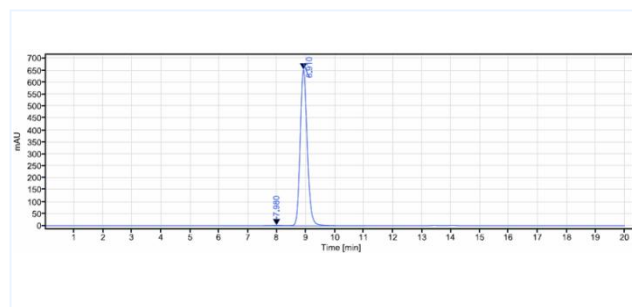
## Data

### Purity: SDS-PAGE



Anti-KIR2DL1 / CD158a (Innate patent anti-KIR2DL) on SDS-PAGE under reducing (R) condition. The purity of the protein is greater than 90%.

### Purity: SEC-HPLC



The purity of Anti-KIR2DL1 / CD158a (Innate patent anti-KIR2DL) is more than 95%, determined by SEC-HPLC.