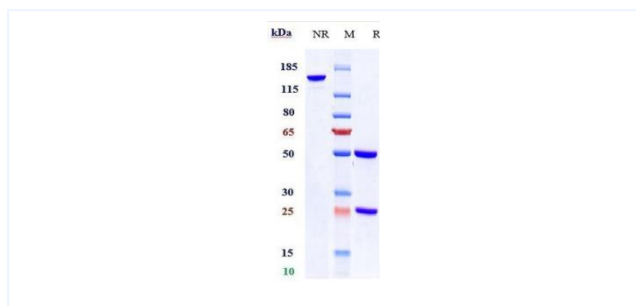


Product Details

Product name:	Anti-human EpCAM / TROP1 / CD326 (citatuzumab Biosimilar)	SKU:	BIO0153SM
Target Name:	EpCAM / TROP1 / CD326	Size:	1 mg/5 mg/20 mg
Target Uniprot:	P16422	Concentration:	Lyophilized
Clone#:	citatuzumab	Isotype:	Human IgG1
Reactivity:	Human	Calculated M.W.:	145.4 kDa
Application:	ELISA, Bioactivity: FACS, Functional assay, Research in vivo	Endotoxin:	<0.001 EU/ug
Formulation:	0.1M Pro, 20mM Arg, pH5.0	Conjugation:	None
Storage:	For long term storage, the produce should be stored at -20° C or lower.	Expression System:	CHO
Reconstitution:	Dissolve with sterile ddH2O	Purification:	Protein A

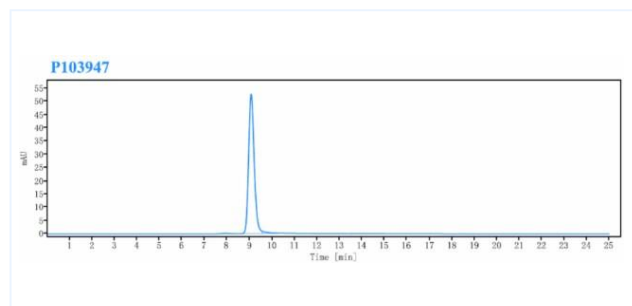
Data

Purity:SDS-PAGE



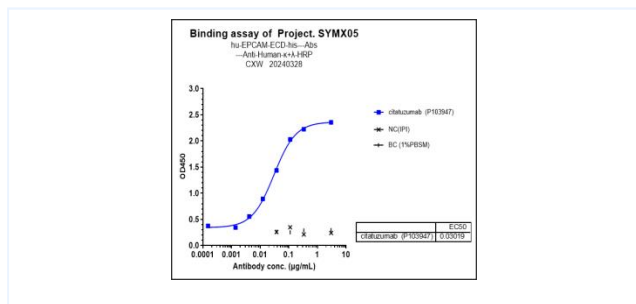
Anti-EpCAM / TROP1 / CD326 (citatuzumab) on SDS-PAGE under reducing (R) condition. The purity of the protein is greater than 95%.

Purity:SEC-HPLC



The purity of Anti-EpCAM / TROP1 / CD326(citatuzumab) is more than 97.95%, determined by SEC-HPLC.

Bioactivity:ELISA



Immobilized human EpCAM / TROP1 / CD326, His Tag at 2 ug/mL can bind citatuzumab, EC50=0.03019 ug/mL.