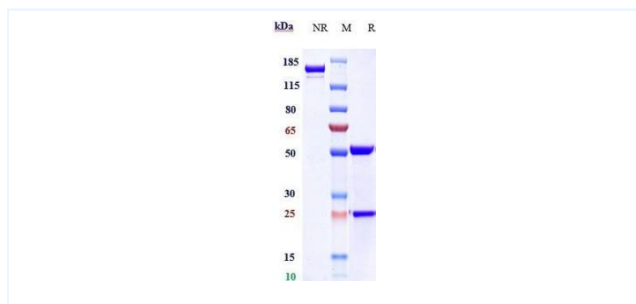


Product Details

Product name:	Anti-human CLDN6 (IMAB027 Biosimilar)	SKU:	BIO0139SM
Target Name:	CLDN6 / CLD6	Size:	1 mg/5 mg/20 mg
Target Uniprot:	P56747	Concentration:	Lyophilized
Clone#:	IMAB027	Isotype:	Human IgG1
Reactivity:	Human	Calculated M.W.:	144.42 kDa
Application:	ELISA, Bioactivity: FACS, Functional assay, Research in vivo	Endotoxin:	<0.001 EU/ug
Formulation:	0.1M Pro, 20mM Arg, pH5.0	Conjugation:	None
Storage:	For long term storage, the produce should be stored at -20° C or lower.	Expression System:	CHO
Reconstitution:	Dissolve with sterile ddH2O	Purification:	Protein A

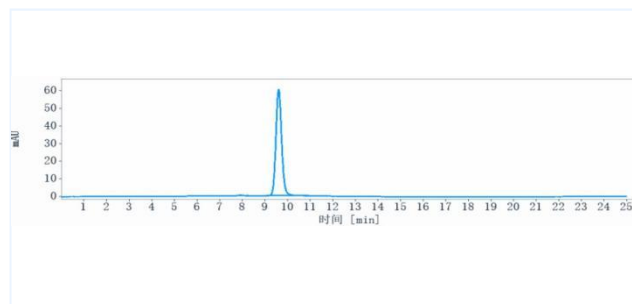
Data

Purity:SDS-PAGE



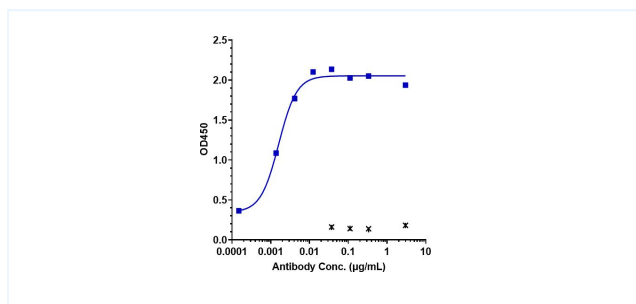
Anti-CLDN6 (IMAB027) on SDS-PAGE underreducing (R) condition. The purity of the protein is greater than 95%.

Purity:SEC-HPLC



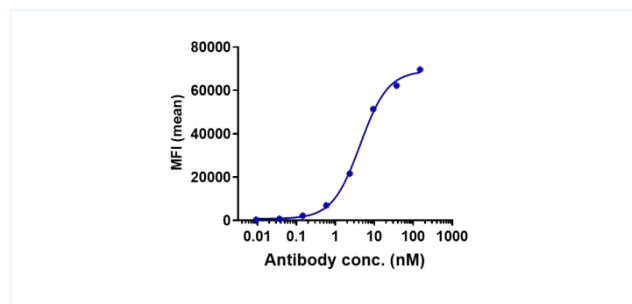
The purity of Anti-CLDN6 (IMAB027) is 98.41%, determined by SEC-HPLC.

Bioactivity:ELISA



Immobilized human CLDN6 VLP at 8 ug/mL can bind Anti-CLDN6 (IMAB027), EC50=0.001599 ug/mL.

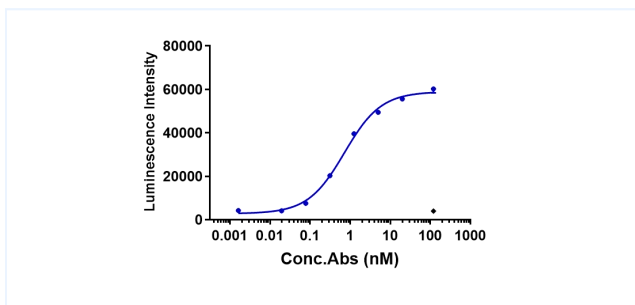
Bioactivity:FACS



Human CLDN6 CHO cells were stained with Anti-CLDN6 (IMAB027) and negative control protein respectively, washed and then followed by PE and analyzed with FACS, EC50=4.342 nM.

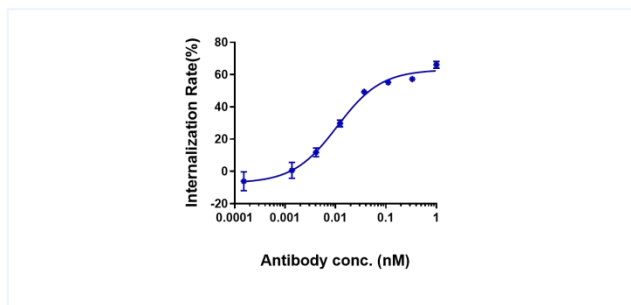
Important Note: This product as supplied is intended for research use only, not for use in human, therapeutic or diagnostic applications.

Function:ADCC



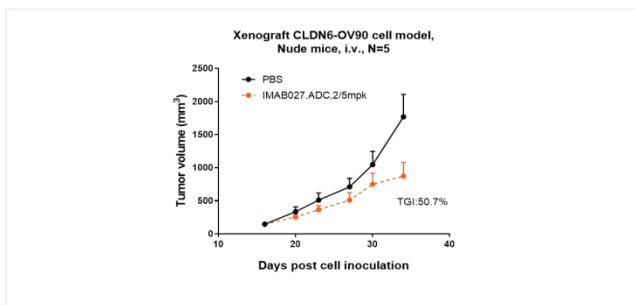
Anti-CLDN6 (IMAB027) induced ADCC activity was evaluated using Human CD16a (158V) (Luc) JurkatReporter Cell. The max induction fold was approximately 14.16.

Function:Internalization



Anti-CLDN6 (IMAB027) by huCLDN6-HEK293 increased with the increase of antibody concentration, and the Internalization Rate (%) reached 60% at antibody concentration of 1 nM.

Research in vivo



IMAB027 inhibited the tumor growth of OV90 on Balb/c nude mice. The result showed significant anti-tumor effects, with an tumor inhibition rate (TGI) of 50.7% at 5 mpk at D34.