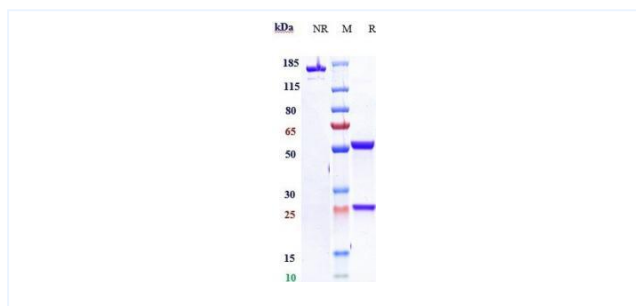


Product Details

Product name:	Anti-human CLDN18.2 (zolbetuximab Biosimilar)	SKU:	BIO0138SM
Target Name:	CLDN18.2	Size:	1 mg/5 mg/20 mg
Target Uniprot:	P56856	Concentration:	Lyophilized
Clone#:	zolbetuximab	Isotype:	Human IgG1
Reactivity:	Human	Calculated M.W.:	150 kDa
Application:	ELISA, Bioactivity: FACS, Functional assay, Research in vivo	Endotoxin:	<0.001 EU/ug
Formulation:	0.1M Pro, 20mM Arg, pH5.0	Conjugation:	None
Storage:	For long term storage, the produce should be stored at -20° C or lower.	Expression System:	CHO
Reconstitution:	Dissolve with sterile ddH2O	Purification:	Protein A

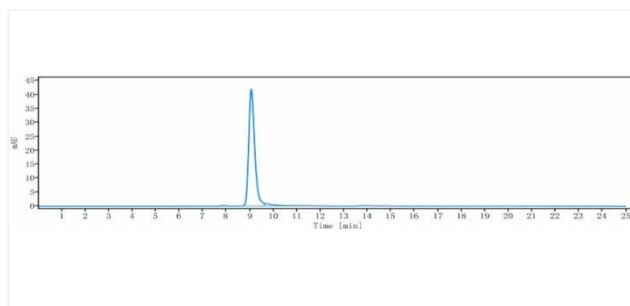
Data

Purity:SDS-PAGE



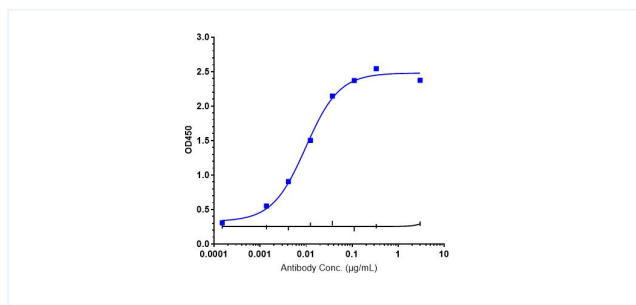
Anti-CLDN18.2 (zolbetuximab) on SDS-PAGE under reducing (R) condition. The purity of the protein is greater than 95%.

Purity:SEC-HPLC



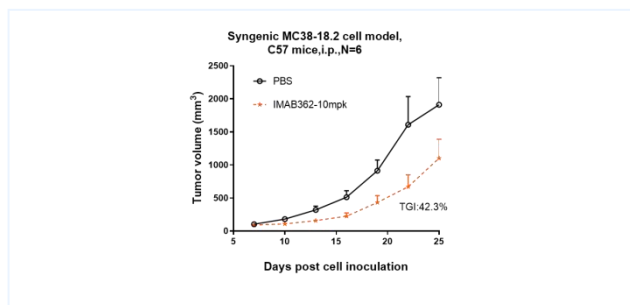
The purity of Anti-CLDN18.2 (zolbetuximab) is 96.05%, determined by SEC-HPLC.

Bioactivity:ELISA



Immobilized human CLDN18.2 VLP at 2 ug/mL can bind Anti-CLDN18.2 (zolbetuximab), EC50=0.07951ug/mL.

Research in vivo



Zolbetuximab inhibited the tumor growth of CLDN18.2-MC38 (Mouse colorectal cancer cells) on C57BL/6N mice. The result showed significant anti-tumor effects, with a tumor inhibition rate (TGI) of 42.3% at 10 mpk at D25.