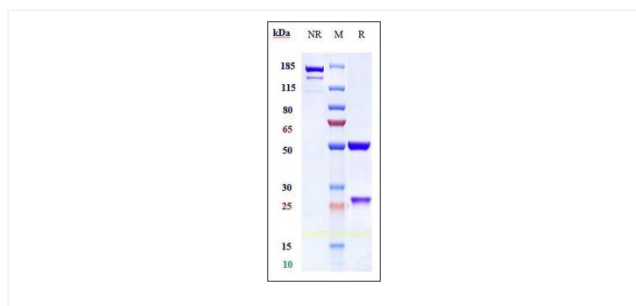


Product Details

Product name:	Anti-human Alpha-synuclein (cinpanemab Biosimilar)	SKU:	BIO0089SM
Target Name:	Alpha-synuclein	Size:	1 mg/5 mg/20 mg
Target Uniprot:	Q9Y6H5	Concentration:	Lyophilized
Clone#:	cinpanemab	Isotype:	Human IgG1
Reactivity:	Human	Calculated M.W.:	150 kDa
Application:	ELISA, Bioactivity: FACS, Functional assay, Research in vivo	Endotoxin:	<0.001 EU/ug
Formulation:	0.1M Pro, 20mM Arg, pH5.0	Conjugation:	None
Storage:	For long term storage, the produce should be stored at -20° C or lower.	Expression System:	CHO
Reconstitution:	Dissolve with sterile ddH2O	Purification:	Protein A

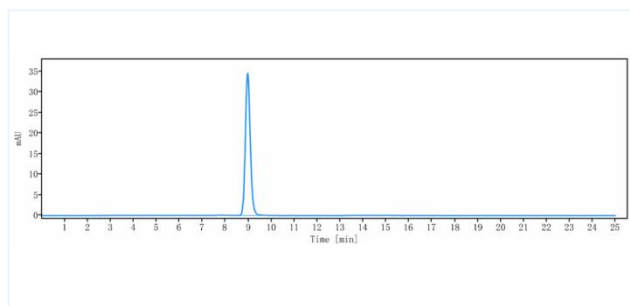
Data

Purity:SDS-PAGE



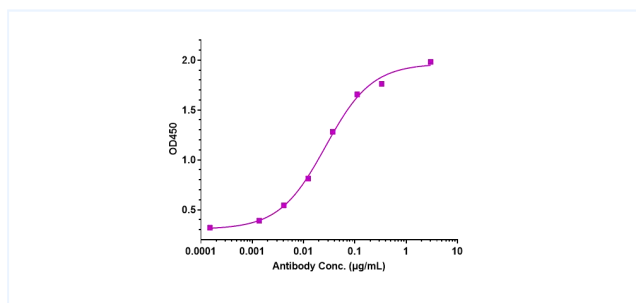
Anti-Alpha-synuclein (cinpanemab) on SDS-PAGE under reducing (R) condition. The purity of the protein is greater than 95%.

Purity:SEC-HPLC



The purity of Anti-Alpha-synuclein(cinpanemab) is 99.69%, determined by SEC-HPLC.

ELISA



Immobilized Human Alpha-synuclein, Fc Tag at 2 g/mL can bind Anti-Alpha-synuclein (cinpanemab), The EC50 was approximately 0.02682 ug/mL.