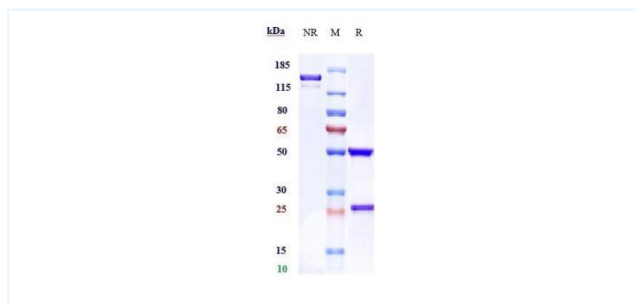


Product Details

Product name:	Anti-human ROR1 (zilovetamab Biosimilar)	SKU:	BIO0072SM
Target Name:	ROR1	Size:	1 mg/5 mg/20 mg
Target Uniprot:	Q01973	Concentration:	Lyophilized
Clone#:	zilovetamab	Isotype:	Human IgG1
Reactivity:	Human	Calculated M.W.:	145.12 kDa
Application:	ELISA, Bioactivity: FACS, Functional assay, Research in vivo	Endotoxin:	<0.001 EU/ug
Formulation:	0.1M Pro, 20mM Arg, pH5.0	Conjugation:	None
Storage:	For long term storage, the produce should be stored at -20° C or lower.	Expression System:	CHO
Reconstitution:	Dissolve with sterile ddH2O	Purification:	Protein A

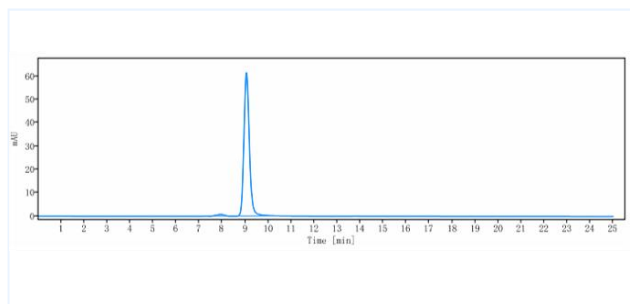
Data

Purity:SDS-PAGE



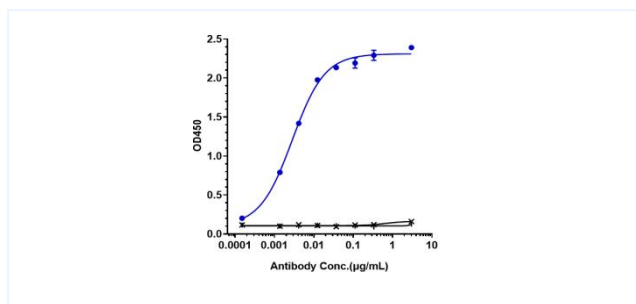
Anti-ROR1 (zilovetamab) on SDS-PAGE under reducing (R) condition. The purity of the protein is greater than 95%.

Purity:SEC-HPLC



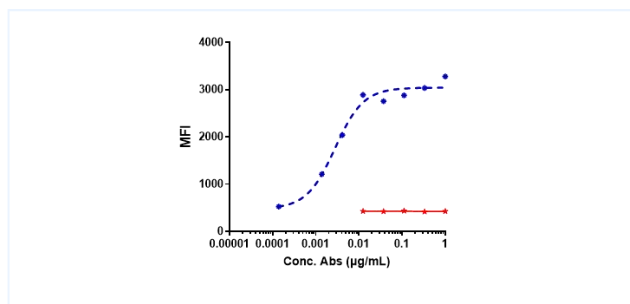
The purity of Anti-ROR1 (zilovetamab) is 98.21%, determined by SEC-HPLC.

Bioactivity:ELISA



Immobilized human ROR1 His at 2 ug/mL can bind Anti-ROR1 (zilovetamab), EC50=0.00283 ug/mL.

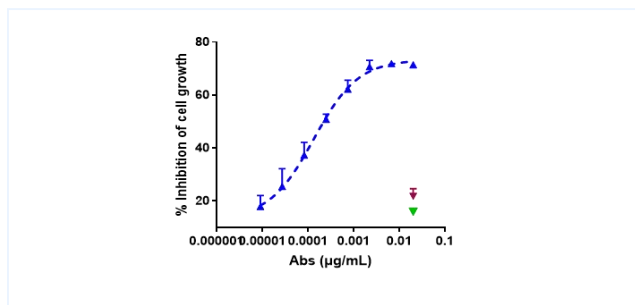
FACS



A549 cells were stained with Anti-ROR1 (zilovetamab) and negative control protein respectively, washed and then followed by PE and analyzed with FACS, EC50=0.002776 ug/ml.

Important Note: This product as supplied is intended for research use only, not for use in human, therapeutic or diagnostic applications.

Function: Internalization



zilovertamab by Human ROR1 HEK293T cells increased with the increase of antibody concentration, and the Internalization Rate (%) reached 72%.