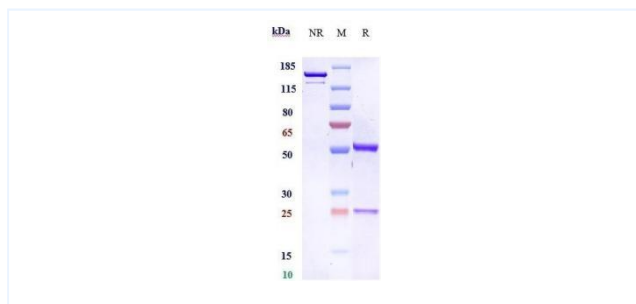


Product Details

Product name:	Anti-human FGFR2 / CD332 (bemarituzumab Biosimilar)	SKU:	BIO0031SM
Target Name:	FGFR2 / CD332	Size:	1 mg/5 mg/20 mg
Target Uniprot:	P21802	Concentration:	Lyophilized
Clone#:	bemarituzumab	Isotype:	Human IgG1
Reactivity:	Human	Calculated M.W.:	144 kDa
Application:	ELISA, Bioactivity: FACS, Functional assay, Research in vivo	Endotoxin:	<0.001 EU/ug
Formulation:	0.1M Pro, 20mM Arg, pH5.0	Conjugation:	None
Storage:	For long term storage, the produce should be stored at -20° C or lower.	Expression System:	CHO
Reconstitution:	Dissolve with sterile ddH2O	Purification:	Protein A

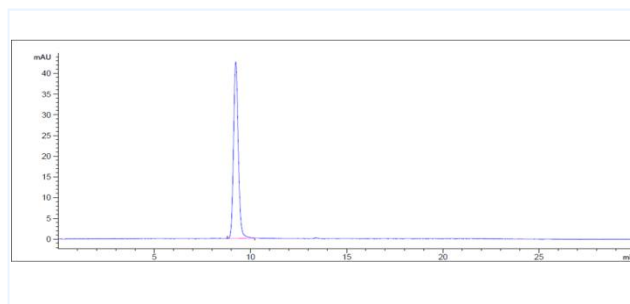
Data

Purity:SDS-PAGE



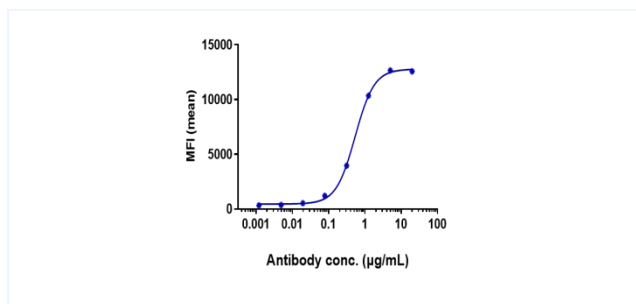
Anti-FGFR2 / CD332 (bemarituzumab) on SDS-PAGE under reducing (R) condition. The purity of the protein is greater than 95%.

Purity:SEC-HPLC



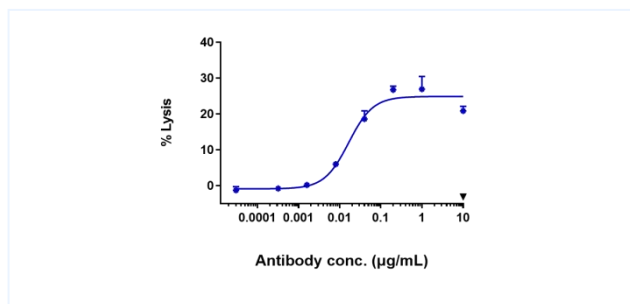
The purity of Anti-FGFR2 / CD332 (bemarituzumab) is 100%, determined by SEC-HPLC.

Bioactivity:FACS



SNU-16 cells were stained with Anti-FGFR2 / CD332 (bemarituzumab) and negative control protein respectively, washed and then followed by PE and analyzed with FACS, EC₅₀=0.5368 µg/mL.

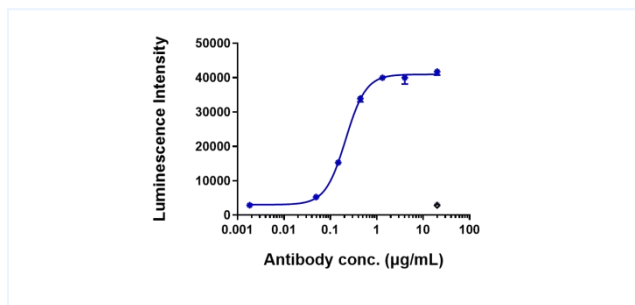
Function:ADCC



Anti-FGFR2 / CD332 (bemarituzumab) induced ADCC activity was evaluated using Human FGFR2 HEK293 Reporter Cell. The max induction fold was approximately 25.

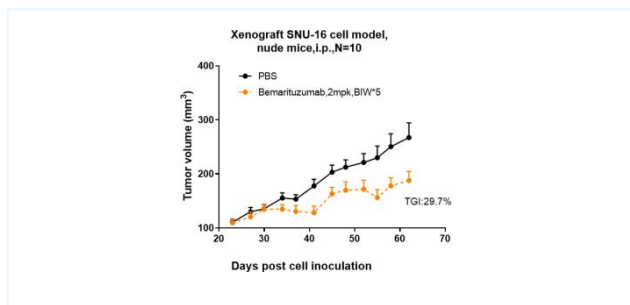
Important Note: This product as supplied is intended for research use only, not for use in human, therapeutic or diagnostic applications.

Function:ADCC Luciferase



Anti-FGFR2 / CD332 (bemarituzumab) -ADCC luciferase Assay on KATOIII cells. The maximum suppression factor is approximately 14.

Research in vivo



Bemarituzumab inhibited the tumor growth of SNU-16 on Balb/c nude mice. The result showed significant anti-tumor effects, with a tumor inhibition rate (TGI) of 29.7% at 2 mpk at D62.