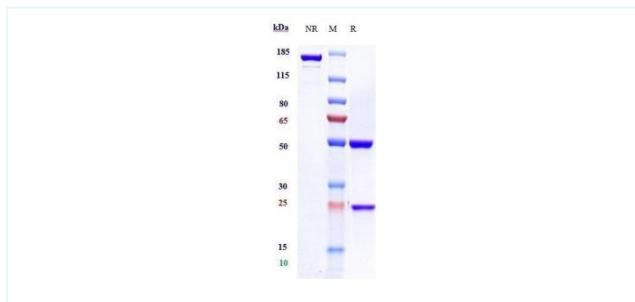


## Product Details

Product name:	Anti-human CD20 (rituximab Biosimilar)	SKU:	BIO0003SM
Target Name:	CD20	Size:	1 mg/5 mg/20 mg
Target Uniprot:	P11836	Concentration:	Lyophilized
Clone#:	rituximab	Isotype:	Human IgG1
Reactivity:	Human, Cynomolgus	Calculated M.W.:	145.2 kDa
Application:	ELISA, Bioactivity: FACS, Functional assay, Research in vivo	Endotoxin:	<0.001 EU/ug
Formulation:	0.1M Pro, 20mM Arg, pH5.0	Conjugation:	None
Storage:	For long term storage, the produce should be stored at -20° C or lower.	Expression System:	CHO
Reconstitution:	Dissolve with sterile ddH2O	Purification:	Protein A

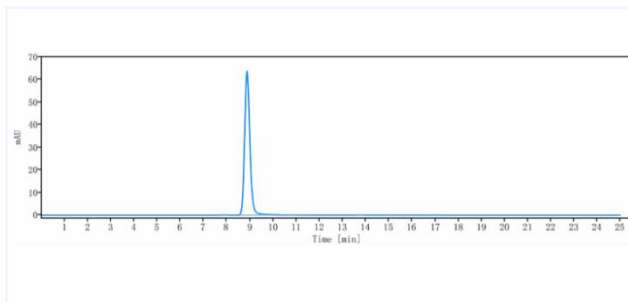
## Data

### Purity:SDS-PAGE



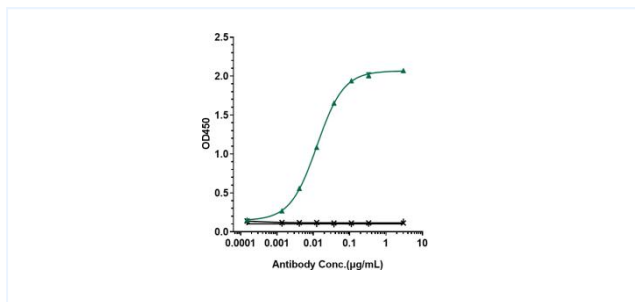
Anti-CD20 (rituximab) on SDS-PAGE under reducing (R) condition. The purity of the protein is greater than 95%.

### Purity:SEC-HPLC



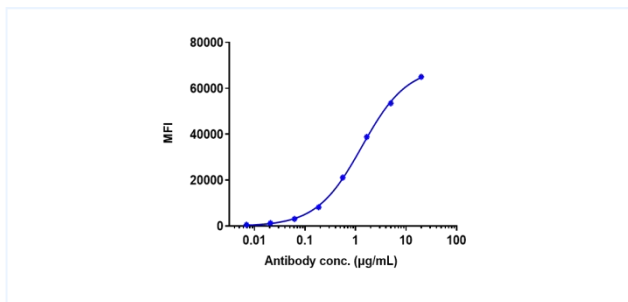
The purity of Anti-CD20 (rituximab) is 98.97%, determined by SEC-HPLC.

### Bioactivity:ELISA



Immobilized human EGFR His at 2 ug/mL can bind Anti-CD20 (rituximab), EC50=0.01573/0.01258 ug/mL.

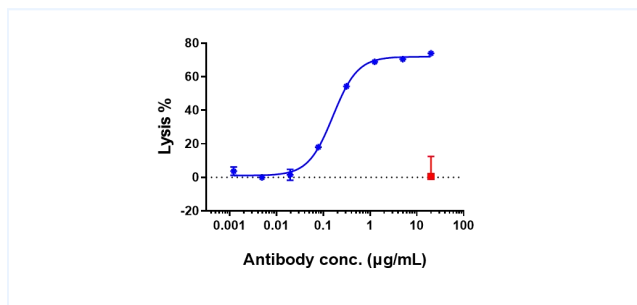
### Bioactivity:FACS



Raji cells were stained with Anti-CD20 (rituximab) and negative control protein respectively, washed and then followed by PE and analyzed with FACS, EC50=1.334 ug/mL.

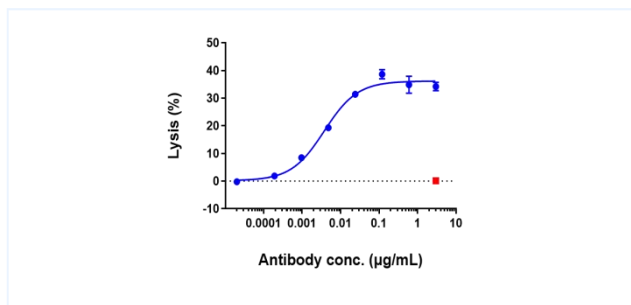
**Important Note:** This product as supplied is intended for research use only, not for use in human, therapeutic or diagnostic applications.

### Function: CDC



Anti-CD20 (rituximab)-induced CDC activity was evaluated using Raji Cell. The max Lysis rate was approximately 74%.

### Function: ADCC



Anti-CD20 (rituximab) induced ADCC activity was evaluated using Raji Cell. The max Lysis rate was approximately 35%.