

bsm-30178A**[Primary Antibody]****mouse Ly-6G/Ly-6C Rat mAb****BioSS**
ANTIBODIES

www.bioss.com.cn

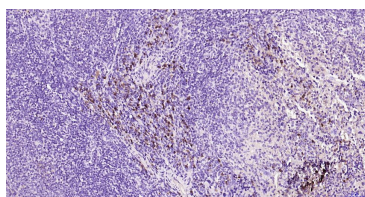
sales@bioss.com.cn

techsupport@bioss.com.cn

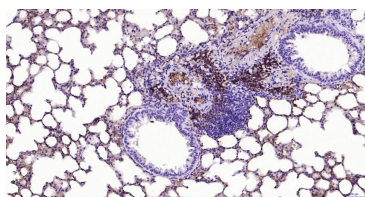
400-901-9800

— DATASHEET —

Host: Rat	Isotype: Rat IgG2b, κ	Applications: IHC-P (1:100-500) IHC-F (1:100-500) IF (1:100-500) Flow-Cyt (1:50-100) Reactivity: Mouse Predicted MW.: 14 kDa Subcellular Location: Cell membrane
Clonality: Monoclonal	CloneNo.: RB6-8C5	
GeneID: 546644	SWISS: P35461	
Target: mouse Ly-6G/Ly-6C		
Purification: affinity purified by Protein G		
Concentration: 1mg/ml		
Storage: 0.01M PBS. Store at 2-8°C. Avoid repeated freeze/thaw cycles.		
Background: Ly6G is a GPI-anchored protein, that is also known as the myeloid differentiation antigen Gr1. The antigen is transiently expressed on monocytes in the bone marrow. The level of antigen expression in the bone marrow directly correlates with granulocyte differentiation and maturation. Ly6G is expressed predominantly on neutrophils, also in a subset of eosinophils, differentiating pre-monocytes, and plasmacytoid dendritic cells.		

— VALIDATION IMAGES —

Paraformaldehyde-fixed, paraffin embedded Mouse spleen; Antigen retrieval by boiling in sodium citrate buffer (pH6.0) for 15 min; Antibody incubation with Ly-6G Monoclonal Antibody, Unconjugated(bsm-30178A) at 1:200 overnight at 4°C, followed by conjugation to the bs-0293G-HRP and DAB (C-0010) staining.



Paraformaldehyde-fixed, paraffin embedded Mouse lung; Antigen retrieval by boiling in sodium citrate buffer (pH6.0) for 15 min; Antibody incubation with Ly-6G Monoclonal Antibody, Unconjugated(bsm-30178A) at 1:200 overnight at 4°C, followed by conjugation to the bs-0293G-HRP and DAB (C-0010) staining.