

bs-18317R**[Primary Antibody]****LMTK3 Rabbit pAb****Bioss**
ANTIBODIES

www.bioss.com.cn

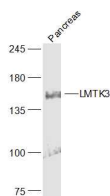
sales@bioss.com.cn

techsupport@bioss.com.cn

400-901-9800

— DATASHEET —

Host: Rabbit	Isotype: IgG	Applications: WB (1:500-2000)
Clonality: Polyclonal		Reactivity: Mouse (predicted: Human, Pig, Sheep, Cow, Cat, GuineaPig)
GeneID: 114783	SWISS: Q96Q04	Predicted MW.: 151 kDa
Target: LMTK3		Subcellular Location: Cell membrane
Immunogen: KLH conjugated synthetic peptide derived from human LMTK3: 1301-1400/1460.		
Purification: affinity purified by Protein A		
Concentration: 1mg/ml		
Storage: 0.01M TBS (pH7.4) with 1% BSA, 0.02% Proclin300 and 50% Glycerol. Shipped at 4°C. Store at -20°C for one year. Avoid repeated freeze/thaw cycles.		
Background: The phosphorylation of proteins by protein kinases and protein phosphatases is a key event in most nuclear and cytoplasmic processes. The ability to activate and deactivate proteins via phosphorylation or dephosphorylation is important for cell division, cell differentiation, DNA repair and transcription. LMTK3 (lemur tyrosine kinase 3), also known as LMR3 or TYKLM3, is a 1,460 amino acid protein that contains one protein kinase domain. One of several members of the protein kinase superfamily, LMTK3 is expressed at low levels in brain and testis where it catalyzes the ATP-dependent phosphorylation of target proteins, thereby modifying their function.		

— VALIDATION IMAGES —

Sample: Pancreas (Mouse) Lysate at 40 ug
Primary: Anti-LMTK3 (bs-18317R) at 1/300
dilution Secondary: IRDye800CW Goat Anti-
Rabbit IgG at 1/20000 dilution Predicted band
size: 151 kD Observed band size: 151 kD