

bs-10166R**[Primary Antibody]****KDM1/LSD1 Rabbit pAb****BioSS**
ANTIBODIES

www.bioss.com.cn

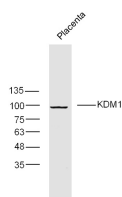
sales@bioss.com.cn

techsupport@bioss.com.cn

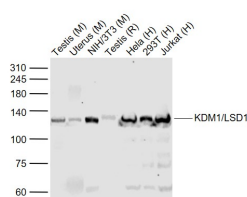
400-901-9800

— DATASHEET —

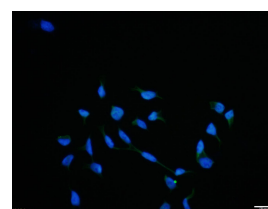
Host: Rabbit	Isotype: IgG	Applications: WB (1:500-2000) ICC/IF (1:100)
Clonality: Polyclonal		
GeneID: 23028	SWISS: O60341	Reactivity: Human, Mouse, Rat (predicted: Rabbit, Pig, Cow, Chicken, Dog)
Target: KDM1/LSD1		
Immunogen: KLH conjugated synthetic peptide derived from human KDM1: 301-400/852.		
Purification: affinity purified by Protein A		Predicted MW.: 94 kDa
Concentration: 1mg/ml		Subcellular Location: Nucleus
Storage: 0.01M TBS (pH7.4) with 1% BSA, 0.02% Proclin300 and 50% Glycerol. Shipped at 4°C. Store at -20°C for one year. Avoid repeated freeze/thaw cycles.		
Background: Gene activation and repression is specifically regulated by histone methylation status at distinct lysine residues. Lysine specific demethylase 1 (KDM1/LSD1) is a long-sought histone demethylase that specifically demethylates mono and di methyl histone H3 at K4 and K9. Thus KDM1 is a specific tag for epigenetic transcriptional activation, thereby acting as a corepressor.		

— VALIDATION IMAGES —

Sample: placenta (Mouse) Lysate at 40 ug
 Primary: Anti-KDM1(bs-10166R) at 1/300 dilution
 Secondary: IRDye800CW Goat Anti-Rabbit IgG at 1/20000 dilution Predicted band size: 94 kD
 Observed band size: 94 kD



Sample: Lane 1: Testis (Mouse) Lysate at 40 ug
 Lane 2: Uterus (Mouse) Lysate at 40 ug Lane 3: NIH/3T3 (Mouse) Cell Lysate at 30 ug Lane 4: Testis (Rat) Lysate at 40 ug Lane 5: HeLa (Human) Cell Lysate at 30 ug Lane 6: 293T (Human) Cell Lysate at 30 ug Lane 7: Jurkat (Human) Cell Lysate at 30 ug Primary: Anti-KDM1/LSD1 (bs-10166R) at 1/1000 dilution Secondary: IRDye800CW Goat Anti-Rabbit IgG at 1/20000 dilution Predicted band size: 120 kD Observed band size: 120 kD



HeLa cell; 4% Paraformaldehyde-fixed; Triton X-100 at room temperature for 20 min; Blocking buffer (normal goat serum, C-0005) at 37°C for 20 min; Antibody incubation with (KDM1/LSD1) polyclonal Antibody, Unconjugated (bs-10166R) 1:100, 90 minutes at 37°C; followed by a conjugated Goat Anti-Rabbit IgG antibody at 37°C for 90 minutes, DAPI (blue, C02-04002) was used to stain the cell nuclei.