

bs-11367R**[Primary Antibody]****SYNPR/Synaptoporin Rabbit pAb****BioSS**
ANTIBODIES

www.bioss.com.cn

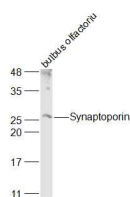
sales@bioss.com.cn

techsupport@bioss.com.cn

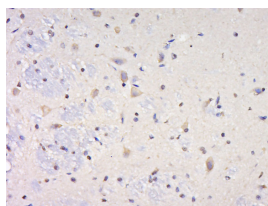
400-901-9800

— DATASHEET —

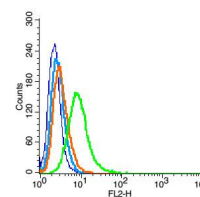
Host: Rabbit Clonality: Polyclonal GeneID: 132204 Target: SYNPR/Synaptoporin Immunogen: KLH conjugated synthetic peptide derived from human Synaptoporin: 31-130/265. Purification: affinity purified by Protein A Concentration: 1mg/ml Storage: 0.01M TBS (pH7.4) with 1% BSA, 0.02% Proclin300 and 50% Glycerol. Shipped at 4°C. Store at -20°C for one year. Avoid repeated freeze/thaw cycles. Background: Synaptic vesicle recycling involves numerous proteins that contribute to the formation and trafficking of the SNARE complexes throughout the cell. Synaptoporin, also designated synaptophysin 2, is an integral membrane protein of small synaptic vesicles that belongs to the synaptophysin/synaptobrevin family. Synaptoporin is highly homologous to Synaptophysin 1 and both Synaptoporin and synaptophysin 1 contain four transmembrane domains and a short cytoplasmic tail. The Synaptoporin protein also contains one MARVEL domain, a membrane-associating domain found in lipid-associating proteins, and displays calcium-binding activity which may be localized to its cytoplasmic tail. Synaptophysin, synaptophysin and Synaptoporin regulate the formation of the vesicles by competing with components of the SNARE complexes to respectively inhibit either the assembly or the secretion of the synaptic vesicles.	Isotype: IgG SWISS: Q8TBG9 Applications: WB (1:500-2000) IHC-P (1:100-500) IHC-F (1:100-500) IF (1:100-500) Flow-Cyt (1µg/Test) Reactivity: Rat (predicted: Human, Mouse) Predicted MW.: 29 kDa Subcellular Location: Cell membrane ,Cytoplasm
---	--

— VALIDATION IMAGES —

Sample: Bulbus olfactorius (Rat) Lysate at 40 ug
Primary: Anti-Synaptoporin (bs-11367R) at 1/1000 dilution
Secondary: IRDye800CW Goat Anti-Rabbit IgG at 1/20000 dilution
Predicted band size: 29 kD
Observed band size: 28 kD



Paraformaldehyde-fixed, paraffin embedded (rat brain); Antigen retrieval by boiling in sodium citrate buffer (pH6.0) for 15min; Block endogenous peroxidase by 3% hydrogen peroxide for 20 minutes; Blocking buffer (normal goat serum) at 37°C for 30min; Antibody incubation with (SYNPR) Polyclonal Antibody, Unconjugated (bs-11367R) at 1:800 overnight at 4°C, followed by a conjugated secondary (sp-0023) for 20 minutes and DAB staining.



Blank control(blue): RSC96(fixed with 2% paraformaldehyde (10 min)). Primary Antibody:Rabbit Anti-SYNPR/Synaptoporin antibody(bs-11367R), Dilution: 5µg in 100 µL 1X PBS containing 0.5% BSA; Isotype Control Antibody: Rabbit IgG(orange) ,used under the same conditions); Secondary Antibody: Goat anti-rabbit IgG-PE(white blue), Dilution: 1:200 in 1 X PBS containing 0.5% BSA.

— SELECTED CITATIONS —

- **[IF=7.26]** Zhang, Chi, et al. "The potential use of H102 peptide-loaded dual-functional nanoparticles in the treatment of Alzheimer' s disease." Journal of Controlled Release (2014). **WB ;Mouse**. 25102404
- **[IF=1.177]** Zhenting Huang . et al. Anti-Cognitive Decline by Yinxing-Mihuan-Oral-Liquid via Activating CREB/BDNF

Important Note: This product as supplied is intended for research use only, not for use in human, therapeutic or diagnostic applications.

