

PAH Rabbit pAb

Catalog Number: bs-21005R

Target Protein: PAH

Concentration: 1mg/ml

Form: Liquid

Host: Rabbit

Clonality: Polyclonal

Isotype: IgG

Applications: WB (1:500-2000)

Reactivity: Human (predicted:Mouse, Rat, Cow)

Predicted MW: 52 kDa

Entrez Gene: 5053

Swiss Prot: P00439

Source: KLH conjugated synthetic peptide derived from human PAH: 1-100/452.

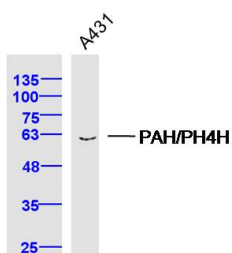
Purification: affinity purified by Protein A

Storage: 0.01M TBS (pH7.4) with 1% BSA, 0.02% Proclin300 and 50% Glycerol.

Shipped at 4°C. Store at -20°C for one year. Avoid repeated freeze/thaw cycles.

Background: This gene encodes a member of the bipterin-dependent aromatic amino acid hydroxylase protein family. The encoded phenylalanine hydroxylase enzyme hydroxylates phenylalanine to tyrosine and is the rate-limiting step in phenylalanine catabolism. Deficiency of this enzyme activity results in the autosomal recessive disorder phenylketonuria. [provided by RefSeq, Aug 2017]

VALIDATION IMAGES



Sample: A431 Cell (Human) Lysate at 40 ug Primary: Anti-PAH/PH4H (bs-21005R) at 1/300 dilution Secondary: IRDye800CW Goat Anti-Rabbit IgG at 1/20000 dilution Predicted band size: 52 kD Observed band size: 60 kD