

**bs-19997R****[ Primary Antibody ]****PACE4 Rabbit pAb****Bioss**  
ANTIBODIES

www.bioss.com.cn

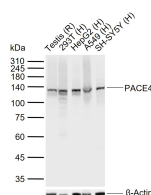
sales@bioss.com.cn

techsupport@bioss.com.cn

400-901-9800

**DATASHEET**

<b>Host:</b> Rabbit	<b>Isotype:</b> IgG	<b>Applications:</b> <b>WB</b> (1:500-2000) <b>ELISA</b> (1:5000-10000)
<b>Clonality:</b> Polyclonal		
<b>GeneID:</b> 5046	<b>SWISS:</b> P29122	
<b>Target:</b> PACE4		<b>Reactivity:</b> Human, Rat (predicted: Mouse, Rabbit, Pig, Sheep, Cow, Dog, Horse)
<b>Immunogen:</b> KLH conjugated synthetic peptide derived from human PACE4: 711-810/969.		<b>Predicted MW.:</b> 91 kDa
<b>Purification:</b> affinity purified by Protein A		<b>Subcellular Location:</b> Secreted
<b>Concentration:</b> 1mg/ml		
<b>Storage:</b> 0.01M TBS (pH7.4) with 1% BSA, 0.02% Proclin300 and 50% Glycerol. Shipped at 4°C. Store at -20°C for one year. Avoid repeated freeze/thaw cycles.		
<b>Background:</b> This gene encodes a member of the subtilisin-like proprotein convertase family, which includes proteases that process protein and peptide precursors trafficking through regulated or constitutive branches of the secretory pathway. The encoded protein undergoes an initial autocatalytic processing event in the ER to generate a heterodimer which exits the ER and sorts to the trans-Golgi network where a second autocatalytic event takes place and the catalytic activity is acquired. The encoded protease is constitutively secreted into the extracellular matrix and expressed in many tissues, including neuroendocrine, liver, gut, and brain. This gene encodes one of the seven basic amino acid- specific members which cleave their substrates at single or paired basic residues. Some of its substrates include transforming growth factor beta related proteins, proalbumin, and von Willebrand factor. This gene is thought to play a role in tumor progression and left-right patterning. Alternatively spliced transcript variants encoding different isoforms have been identified. [provided by RefSeq, Feb 2014]		

**VALIDATION IMAGES**

Sample: Lane 1: Rat Testis tissue lysates Lane 2:  
Human 293T cell lysates Lane 3: Human HepG2  
cell lysates Lane 4: Human A549 cell lysates Lane  
5: Human SH-SY5Y cell lysates Primary: Anti-  
PACE4 (bs-19997R) at 1/1000 dilution Secondary:  
IRDye800CW Goat Anti-Rabbit IgG at 1/20000  
dilution Predicted band size: 91 kDa Observed  
band size: 135 kDa