

**bs-19995R**

**[ Primary Antibody ]**

## PABPC3 Rabbit pAb

**BioSS**  
ANTIBODIES

www.bioss.com.cn

sales@bioss.com.cn

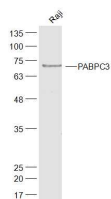
techsupport@bioss.com.cn

400-901-9800

### — DATASHEET —

<b>Host:</b> Rabbit	<b>Isotype:</b> IgG	<b>Applications:</b> WB (1:500-2000)
<b>Clonality:</b> Polyclonal		
<b>GeneID:</b> 5042	<b>SWISS:</b> Q9H361	
<b>Target:</b> PABPC3		
<b>Immunogen:</b> KLH conjugated synthetic peptide derived from human PABPC3: 21-100/631.		
<b>Purification:</b> affinity purified by Protein A		<b>Reactivity:</b> Human (predicted: Mouse, Rat)
<b>Concentration:</b> 1mg/ml		<b>Predicted MW.:</b> 70 kDa
<b>Storage:</b> 0.01M TBS (pH7.4) with 1% BSA, 0.02% Proclin300 and 50% Glycerol. Shipped at 4°C. Store at -20°C for one year. Avoid repeated freeze/thaw cycles.		<b>Subcellular Location:</b> Cytoplasm
<b>Background:</b> Messenger RNA stability and translation initiation are extensively under the control of poly(A)-binding proteins (PABP). See PABPC1 (MIM 604679) for background information.[supplied by OMIM, Jul 2002]		

### — VALIDATION IMAGES —



Sample: Raji(Human) Cell Lysate at 30 ug  
Primary: Anti-PABPC3 (bs-19995R) at 1/300  
dilution Secondary: IRDye800CW Goat Anti-  
Rabbit IgG at 1/20000 dilution Predicted band  
size: 70 kD Observed band size: 70 kD