

bs-5129R**[Primary Antibody]****Bioss**
ANTIBODIES

www.bioss.com.cn

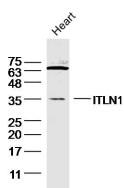
sales@bioss.com.cn

techsupport@bioss.com.cn

400-901-9800

ITLN1 Rabbit pAb**— DATASHEET —**

Host: Rabbit	Isotype: IgG	Applications: WB (1:500-2000)
Clonality: Polyclonal		Reactivity: Human, Mouse (predicted: Rat, Pig, Cow, Horse)
GeneID: 55600	SWISS: Q8WWA0	
Target: ITLN1		Predicted MW.: 35 kDa
Immunogen: KLH conjugated synthetic peptide derived from human ITLN1: 131-230/313.		Subcellular Location: Secreted ,Cell membrane
Purification: affinity purified by Protein A		
Concentration: 1mg/ml		
Storage: 0.01M TBS (pH7.4) with 1% BSA, 0.02% Proclin300 and 50% Glycerol. Shipped at 4°C. Store at -20°C for one year. Avoid repeated freeze/thaw cycles.		
Background: ITLN1 (Intelectin 1) is a Protein Coding gene. Diseases associated with ITLN1 include Obesity and Diabetes Mellitus, Noninsulin-Dependent. Among its related pathways are Common Cytokine Receptor Gamma-Chain Family Signaling Pathways and Innate Immune System. GO annotations related to this gene include carbohydrate binding. An important paralog of this gene is ITLN2.		

— VALIDATION IMAGES —

Sample: heart (mouse) Lysate at 40 ug Primary:
Anti- ITLN1(bs-5129R)at 1/300 dilution
Secondary: IRDye800CW Goat Anti-Rabbit IgG at
1/20000 dilution Predicted band size: 35kD
Observed band size: 35kD

— SELECTED CITATIONS —

- **[IF=6.6]** Xiaoran Fu. et al. The Effect of Mineralocorticoid Receptor 3 Antagonists on Anti-Inflammatory and Anti-Fatty Acid Transport Profile in Patients with Heart Failure. CELLS-BASEL. Cells-Basel. 2022 Jan;11(8):1264 IHC ;Human. 35455943
- **[IF=4.87]** Liu H et al. Lactoferrin protects against iron dysregulation, oxidative stress, and apoptosis in MPTP - induced Parkinson's disease in mice. J Neurochem. 2019 Aug 23. IHC,WB ;Mouse. 31442326