

**bs-5581R****[ Primary Antibody ]****phospho-PIK3C3 (Ser164) Rabbit pAb****BioSS**  
ANTIBODIES

www.bioss.com.cn

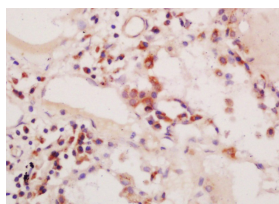
sales@bioss.com.cn

techsupport@bioss.com.cn

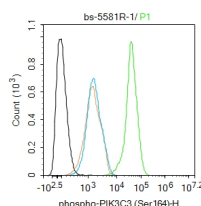
400-901-9800

**DATASHEET**

|  |   |   |
|--|---|---|
| <b>Host:</b> Rabbit<br><b>Clonality:</b> Polyclonal<br><b>GeneID:</b> 5289<br><b>Target:</b> PIK3C3 (Ser164)<br><b>Immunogen:</b> KLH conjugated Synthesised phosphopeptide derived from human PIK3C3 around the phosphorylation site of Ser164: RT(p-S)ST.<br><b>Purification:</b> affinity purified by Protein A<br><b>Concentration:</b> 1mg/ml<br><b>Storage:</b> 0.01M TBS (pH7.4) with 1% BSA, 0.02% Proclin300 and 50% Glycerol.<br>Shipped at 4°C. Store at -20°C for one year. Avoid repeated freeze/thaw cycles.<br><b>Background:</b> PI 3 Kinase Class 3 is a member of the PI3/PI4-kinase family. It is the catalytic subunit of the PI3K complex. It is involved in the transport of lysosomal enzyme precursors to lysosomes. It is ubiquitously expressed, with a highest expression in skeletal muscle. | <b>Isotype:</b> IgG<br><b>SWISS:</b> Q8NEB9 | <b>Applications:</b> IHC-P (1:100-500)<br>IHC-F (1:100-500)<br>IF (1:100-500)<br>Flow-Cyt (1ug/Test)<br><b>Reactivity:</b> Human (predicted: Mouse, Rat, Rabbit, Pig, Cow, Chicken, Dog, Horse)<br><b>Predicted MW.:</b> 98 kDa<br><b>Subcellular Location:</b> Cytoplasm |
|--|---|---|

**VALIDATION IMAGES**

Tissue/cell: human lung carcinoma; 4% Paraformaldehyde-fixed and paraffin-embedded; Antigen retrieval: citrate buffer (0.01M, pH 6.0), Boiling bathing for 15min; Block endogenous peroxidase by 3% Hydrogen peroxide for 30min; Blocking buffer (normal goat serum, C-0005) at 37°C for 20 min; Incubation: Anti-phospho-PIK3C3(Ser164) Polyclonal Antibody, Unconjugated(bs-5581R) 1:200, overnight at 4°C, followed by conjugation to the secondary antibody(SP-0023) and DAB(C-0010) staining



Blank control (black line) :HepG2. Primary Antibody (green line): Rabbit Anti-phospho-PIK3C3 (Ser164) antibody (bs-5581R) Dilution:1ug/Test; Secondary Antibody (white blue line) : Goat anti-rabbit IgG-AF488 Dilution: 0.5ug/Test. Isotype control (orange line) : Normal Rabbit IgG Protocol The cells were fixed with 4% PFA (10min at room temperature)and then permeabilized with 90% ice-cold methanol for 20 min at -20°C, The cells were then incubated in 5%BSA to block non-specific protein-protein interactions for 30 min at room temperature .Cells stained with Primary Antibody for 30 min at room temperature. The secondary antibody used for 40 min at room temperature. Acquisition of 20,000 events was performed.

**SELECTED CITATIONS**

- **[IF=8.5]** Wang, Yajing, et al. "Restoring diabetes-induced autophagic flux arrest in ischemic/reperfused heart by ADIPOR (adiponectin receptor) activation involves both AMPK-dependent and AMPK-independent signaling." Autophagy (2017): IHC ;="Mouse". 28825851
- **[IF=5.728]** Zhou Q et al. 2,3',4,4',5-Pentachlorobiphenyl induced autophagy of the thyrocytes via DAPK2/PKD/VPS34pathway. Arch Toxicol. 2019 Apr 24. WB ;Rat. 31020377

Important Note: This product as supplied is intended for research use only, not for use in human, therapeutic or diagnostic applications.