

bsm-52948R**[Primary Antibody]****NEUROD1 Recombinant Rabbit mAb****BioSS**
ANTIBODIES

www.bioss.com.cn

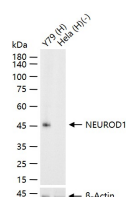
sales@bioss.com.cn

techsupport@bioss.com.cn

400-901-9800

— DATASHEET —

Host: Rabbit	Isotype: IgG	Applications: WB (1:500-2000)
Clonality: Recombinant	CloneNo.: 1C9	Reactivity: Human, Rat
GeneID: 4760	SWISS: Q13562	
Target: NEUROD1		
Immunogen: A synthesized peptide derived from human NeuroD: 1-40/356.		Predicted MW.: 40 kDa
Purification: affinity purified by Protein A		Subcellular Location: Cytoplasm ,Nucleus
Concentration: 1mg/ml		
Storage: 0.01M TBS (pH7.4) with 1% BSA, 0.02% Proclin300 and 50% Glycerol. Shipped at 4°C. Store at -20°C for one year. Avoid repeated freeze/thaw cycles.		
Background: This gene encodes a member of the NeuroD family of basic helix-loop-helix (bHLH) transcription factors. The protein forms heterodimers with other bHLH proteins and activates transcription of genes that contain a specific DNA sequence known as the E-box. It regulates expression of the insulin gene, and mutations in this gene result in type II diabetes mellitus. [provided by RefSeq, Jul 2008]		

— VALIDATION IMAGES —

25 ug total protein per lane of various lysates
(see on figure) probed with NEUROD1
monoclonal antibody, unconjugated
(bsm-52948R) at 1:1000 dilution and 4°C
overnight incubation. Followed by conjugated
secondary antibody incubation at r.t. for 60 min.