

---

## Cyclin M2 Rabbit pAb

Catalog Number: bs-6912R

Target Protein: Cyclin M2

Concentration: 1mg/ml

Form: Liquid

Host: Rabbit

Clonality: Polyclonal

Isotype: IgG

Applications: WB (1:500-2000), Flow-Cyt (3ug/Test)

Reactivity: Human, Mouse (predicted:Rat, Rabbit, Pig, Cow, Dog)

Predicted MW: 96 kDa

Entrez Gene: 54805

Swiss Prot: Q9H8M5

Source: KLH conjugated synthetic peptide derived from human Cyclin M2/CNNM2: 51-150/875.

Purification: affinity purified by Protein A

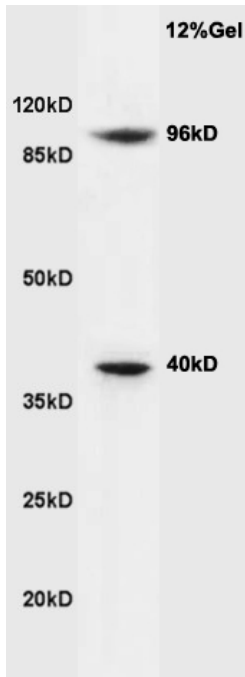
Storage: 0.01M TBS (pH7.4) with 1% BSA, 0.02% Proclin300 and 50% Glycerol.

Shipped at 4°C. Store at -20°C for one year. Avoid repeated freeze/thaw cycles.

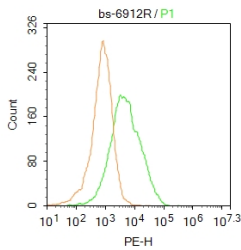
**Background:** Cyclin M2, also known as CNNM2 or ACDP2 (ancient conserved domain-containing protein 2), is an 875 amino acid multi-pass membrane protein that contains two CBS domains and belongs to the ACDP family. Expressed in a variety of tissues with highest expression in placenta, brain and kidney, cyclin M2 functions as a divalent metal cation transporter that mediates the transport of several different metal cations, including Mg<sup>2+</sup>, Co<sup>2+</sup> and Fe<sup>2+</sup>. Cyclin M2 exists as multiple alternatively spliced isoforms and, contrary to its name, exhibits no cyclin-like function in vivo. The gene encoding cyclin M2 maps to human chromosome 10, which houses over 1,200 genes and comprises nearly 4.5% of the human genome. Defects in some of the genes that map to chromosome 10 are associated with Charcot-Marie Tooth disease, Jackson-Weiss syndrome, Usher syndrome, nonsyndromic deafness, Wolman's syndrome, Cowden syndrome, multiple endocrine neoplasia type 2 and porphyria.

### VALIDATION IMAGES

---



Sample: Brain (Mouse) Lysate at 40 ug Primary: Anti-Cyclin M2 (bs-6912R) at 1/300 dilution Secondary: HRP conjugated Goat-Anti-rabbit IgG (bs-0295G-HRP) at 1/5000 dilution Predicted band size: 96 kD Observed band size: 96 kD



Blank control: HepG2. Primary Antibody (green line): Rabbit Anti-Cyclin M2 antibody (bs-6912R) Dilution: 1µg /10<sup>6</sup> cells; Isotype Control Antibody (orange line): Rabbit IgG . Secondary Antibody : Goat anti-rabbit IgG-PE Dilution: 1µg /test. Protocol The cells then incubated in 5%BSA to block non-specific protein-protein interactions for 30 min at room temperature .Cells stained with Primary Antibody for 30 min at room temperature. The secondary antibody used for 40 min at room temperature. Acquisition of 20,000 events was performed.

## PRODUCT SPECIFIC PUBLICATIONS

[IF=4.196] Takashina Y et al. Sodium Citrate Increases Expression and Flux of Mg Transport Carriers Mediated by Activation of MEK/ERK/c-Fos Pathway in Renal Tubular Epithelial Cells.(2018) Nutrients. Sep 20 ;10(10) WB ; Rat . 30241394