

bs-15087R

[Primary Antibody]

C1RL Rabbit pAb

BioSS
ANTIBODIES

www.bioss.com.cn

sales@bioss.com.cn

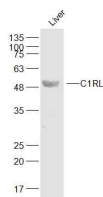
techsupport@bioss.com.cn

400-901-9800

— DATASHEET —

Host: Rabbit	Isotype: IgG	Applications: WB (1:500-2000)
Clonality: Polyclonal		Reactivity: Mouse (predicted: Human, Rat)
GeneID: 51279	SWISS: Q9NZP8	
Target: C1RL		Predicted MW.: 49 kDa
Immunogen: KLH conjugated synthetic peptide derived from human C1RL: 101-200/487.		Subcellular Location: Extracellular matrix
Purification: affinity purified by Protein A		
Concentration: 1mg/ml		
Storage: 0.01M TBS (pH7.4) with 1% BSA, 0.02% Proclin300 and 50% Glycerol. Shipped at 4°C. Store at -20°C for one year. Avoid repeated freeze/thaw cycles.		
Background: No data available.		

— VALIDATION IMAGES —



Sample: Liver(Mouse) Cell Lysate at 40 ug
Primary: Anti-C1RL (bs-15087R) at 1/300 dilution
Secondary: IRDye800CW Goat Anti-Rabbit IgG at 1/20000 dilution Predicted band size: 49 kD
Observed band size: 49 kD