

---

## ASMTY Rabbit pAb

Catalog Number: bs-6961R

Target Protein: ASMTY

Concentration: 1mg/ml

Form: Liquid

Host: Rabbit

Clonality: Polyclonal

Isotype: IgG

Applications: WB (1:500-2000)

Reactivity: Rat (predicted:Human, Mouse, Sheep, Cow, Dog, Horse)

Predicted MW: 38 kDa

Entrez Gene: 438

Swiss Prot: P46597

Source: KLH conjugated synthetic peptide derived from human Dopamine transporter: 241-345/345.

Purification: affinity purified by Protein A

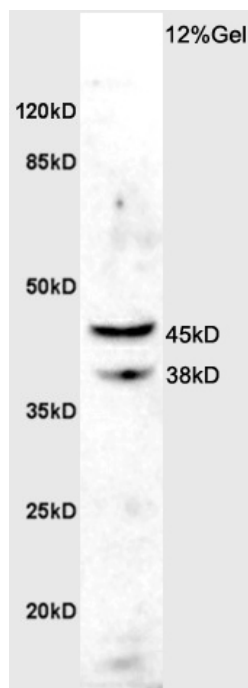
Storage: 0.01M TBS (pH7.4) with 1% BSA, 0.02% Proclin300 and 50% Glycerol.

Shipped at 4°C. Store at -20°C for one year. Avoid repeated freeze/thaw cycles.

Background: Most abundant in pineal gland, less in retina and brain, not in pigment epithelium.

### VALIDATION IMAGES

---



Sample: Brain (Rat) Lysate at 40 ug Primary: Anti- ASMTY (bs-6961R) at 1/300 dilution Secondary: HRP conjugated Goat-Anti-rabbit IgG (bs-0295G-HRP) at 1/5000 dilution Predicted band size: 38 kD Observed band size: 38/45 kD

## PRODUCT SPECIFIC PUBLICATIONS

[IF=10.3] Jinho Kim. et al. Biosynthesis of neuroprotective melatonin is dysregulated in Huntington's disease. J PINEAL RES. 2023 Sep;;e12909 WB ; Human,Mouse . 37721126

[IF=5.249] Zhang, WL.. et al. Expression of arylalkylamine n-acetyltransferase (AANAT) and acetylserotonin o-methyltransferase (ASMT) in the corpus luteum of pregnant sows and synthesis of melatonin in luteal cells. 2021 Nov 24 WB,IHC ; Pig . 34816281

[IF=2.71] Herman, A. P., et al. "Interleukin-1 $\beta$  Modulates Melatonin Secretion in Ovine Pineal Gland: Ex Vivo Study." BioMed Research International (2015). WB ; ="Other Species" . 26339621

[IF=3.24] Herman, A. P., et al. "Central Interleukin-1 $\beta$  Suppresses the Nocturnal Secretion of Melatonin." Mediators of Inflammation 2016 (2016). WB ; ="Others" . 27212805

[IF=1.858] Wenbo Ge. et al. Melatonin protects sheep endometrial epithelial cells against lipopolysaccharide-induced inflammation in vitro. REPROD DOMEST ANIM. 2022 Aug;; IHC ; Sheep . 36018566