

bsm-30018M**[Primary Antibody]****human CD18 Mouse mAb****Bioss**
ANTIBODIES

www.bioss.com.cn

sales@bioss.com.cn

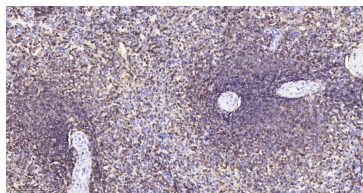
techsupport@bioss.com.cn

400-901-9800

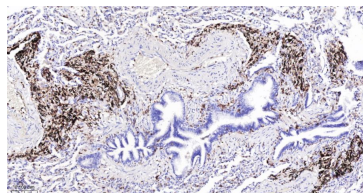
— DATASHEET —**Host:** Mouse**Isotype:** Mouse IgG1, k**Clonality:** Monoclonal**CloneNo.:** 18F7**GeneID:** 3689**SWISS:** P05107**Target:** human CD18**Purification:** affinity purified by Protein G**Concentration:** 1mg/ml**Storage:** 0.01M PBS (pH7.4).

Store at 2-8°C. Protect from light. Avoid freezing.

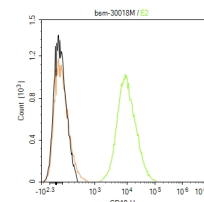
Background: The product of this gene belongs to the integrin beta chain family of proteins. Integrins are integral cell-surface proteins composed of an alpha chain and a beta chain. This gene encodes the integrin beta chain beta 2. A given chain may combine with multiple partners resulting in different integrins. For example, beta 2 combines with the alpha L chain to form the integrin LFA-1, and combines with the alpha M chain to form the integrin Mac-1. Integrins are known to participate in cell adhesion as well as cell-surface mediated signalling. Defects in this gene are the cause of leukocyte adhesion deficiency type I (LAD1). Two transcript variants encoding the same protein have been identified for this gene. [provided by RefSeq, Jul 2008].

Applications: IHC-P (1:100-500)**IHC-F** (1:100-500)**IF** (1:100-500)**Flow-Cyt** (1:50-100)**Reactivity:** Human**Predicted
MW.:** 82 kDa**Subcellular
Location:** Cell membrane**— VALIDATION IMAGES —**

Paraformaldehyde-fixed, paraffin embedded Human Spleen; Antigen retrieval by boiling in sodium citrate buffer (pH6.0) for 15 min; The section was incubated with human CD18 Monoclonal Antibody, Unconjugated (bsm-30018M) at 1:200 overnight at 4°C, followed by conjugation to the bs-40296G-HRP and DAB (C-0010) staining.



Paraformaldehyde-fixed, paraffin embedded Human Lung; Antigen retrieval by boiling in sodium citrate buffer (pH6.0) for 15 min; The section was incubated with human CD18 Monoclonal Antibody, Unconjugated (bsm-30018M) at 1:200 overnight at 4°C, followed by conjugation to the bs-40296G-HRP and DAB (C-0010) staining.



The human blood granulocytes (H) cells were incubated in 5%BSA to block non-specific protein-protein interactions (30 min at r.t.). Primary Antibody (green): Mouse Anti-CD18 antibody (bsm-30018M,1:100); Isotype Control (orange): Mouse IgG (bs-0296P). Blank control (black): PBS. Acquisition of 20,000 events was performed.